

# PROFESSIONAL PORTFOLIO **GENERAL**

*Lemartec Corporation, a MasTec company*

Contact: Maira Suarez - Vice President of Strategic Partnerships | [e.maisuarez@lemartec.com](mailto:e.maisuarez@lemartec.com) | t. 305.903.5089





- As a wholly owned subsidiary and MasTec’s General Contractor, a Minority-Certified Fortune 500 company with over \$13 Billion in revenue and over \$4 Billion in bonding capacity, Lemartec has the financial resources and stability to execute large projects successfully.
- With over 30,000 employees in more than 700 locations throughout the continental United States, Puerto Rico, the US Virgin Islands and Canada, Lemartec has the human resources and the technological infrastructure to execute locally anywhere in North America and the Caribbean.
- As a full service General Contractor and Program Manager, Lemartec leverages its resources and local market expertise to deliver complex, schedule driven and turn-key projects for public and private sector clients.

I want to personally thank you for your consideration and for the opportunity to be part of the team for your next project. We look forward to following up with you to discuss your needs and expectations in detail.

With every good wish,

Manuel R. Garcia-Tuñon  
President



“ **Finding the right Construction Partner with comprehensive capabilities and resources to perform large-scale projects is not easy to do. Lemartec is that company.** ”

- Manuel R. Garcia-Tuñon

# Who We Are

**45+**  
YEARS OF INDUSTRY  
EXPERIENCE

Lemartec is a national Prime General Contractor, Construction/Program Management Firm. As a MasTec company, we maintain international capabilities and strategic partnerships throughout the Americas and the Caribbean to service the most complex of projects throughout various industries.

As a MasTec Company, Lemartec is able to serve our diversified customer base through a network of 30,000 professionals and subject matter experts in Engineering, Procurement, and Construction across over 700 locations throughout North America and the Caribbean.

Forged by a safety-first and relationship-driven mindset, our company culture fosters trust and creates value for all stakeholders - our clients, employees, business partners, the community and the environment.

Our people work with a firm conviction that an integrated approach to design and construction is a critical success factor in each and every project we take on. This commitment to quality from the pre-construction phase through completion has been a corner stone to our success since our founding in 1979. Today, with innovative tenacity and entrepreneurial spirit, our dedicated team of engineering and construction experts continue to advance the Lemartec mission to design and build the best solution for our clients.

Our national client approach allows us to deliver consistent quality and promote the success of your program, not just a single project. We constantly look for ways to increase value and construction savings through value engineering, pre-construction services and a project controls approach during construction which provides our clients with complete visibility and peace of mind.

## Comprehensive Services

- Prime General Contractor
- Preconstruction Services
  - » Building Retrofit
  - » Value Engineering
  - » Cost/Budget Management
  - » High Velocity Wind and Seismic Zones Structure Design
  - » Steel Building Engineering Design and Fabrication
- Construction Services
  - » Interior Build-out/Finishes: Self-perform and/or Program Management
  - » Comprehensive Program Management for Multiple Sites
  - » Fully integrated QA/QC Program
  - » Site-specific Safety Program
  - » Budget Management
  - » Permitting and Site Preparation
  - » Structural Erection/Self-Perform Steel Structure
  - » Competitive Subcontractor Bidding Process Management
  - » Equipment Procurement and Installation
  - » Emergency Recovery/Reconstruction

## Expertise/Capabilities

- Commercial/Retail
- Sports and Entertainment Facilities
- Heavy/Light Industrial Facilities
- Distribution and Storage Facilities
- Aviation MRO hangars and FBOs
- Food and Beverage Facilities
- Pharmaceutical Laboratories
- Mass Grading
- Pre-Engineered Metal Buildings (PEMB)
- Mission Critical/Data Centers
- Power Generation, Transmission, Distribution
- Renewable Energy
- Oil/Gas Pipeline and Facilities
- Communication/Wireless/Wireline Fiber
- Water/Sewer/Civil
- Installations and Fulfillment

# What Sets Us Apart

**\$4 BILLION**  
BONDING CAPACITY

**\$13 BILLION**  
IN REVENUE

**\$905 MILLION**  
EQUIPMENT  
FLEET

**45+**  
YEARS  
EXPERIENCE

**700+**  
LOCATIONS

**TOP  
WORK  
PLACES  
2023-2024**  
**SunSentinel**  
MEDIA GROUP

**0.72**  
**EMR**  
RATING

**+30,000**  
EMPLOYEE  
NETWORK

**#4 ENR**  
**TOP 400**  
CONTRACTORS | 2024

# Our Parent Company, MasTec

**80+**  
YEARS  
EXPERIENCE

Over the course of the last 80 years, MasTec (a publicly traded, fortune 500 company) has been involved in some of the largest and most complex infrastructure construction projects around the country. Their experience has given us a deep and comprehensive understanding of the markets we serve, as well as the ability to effectively manage people, projects, and equipment. It allows us to proactively identify challenges, avoid pitfalls, and overcome obstacles, and to accurately set and meet expectations for schedule and budget.

MasTec, Inc. and its subsidiaries work to continuously streamline and improve business through productivity, controls and accountability with strong organic growth and the ability to leverage company scale.

Backed by our parent company, Lemartec has the geographic reach, scalability and overall financial strength to deliver competitive, high quality of engineering, procurement and construction services with a unique expertise in steel design and construction.

## FINANCIAL STRENGTH

Our strong financial position is a reflection of our proven and consistent ability to deliver projects safely and within budget. **Lemartec's speed and efficiency is backed by a bonding capacity of over \$4 Billion.**



Lemartec Corporation, a MasTec company

# MasTec's Expertise

Heavy Civil & Infrastructure



General Building



Communications



Power Generation



Water & Sewer



Oil & Gas



Industrial



Transmission & Substation



Clean Energy



Rail



Technology Deployment





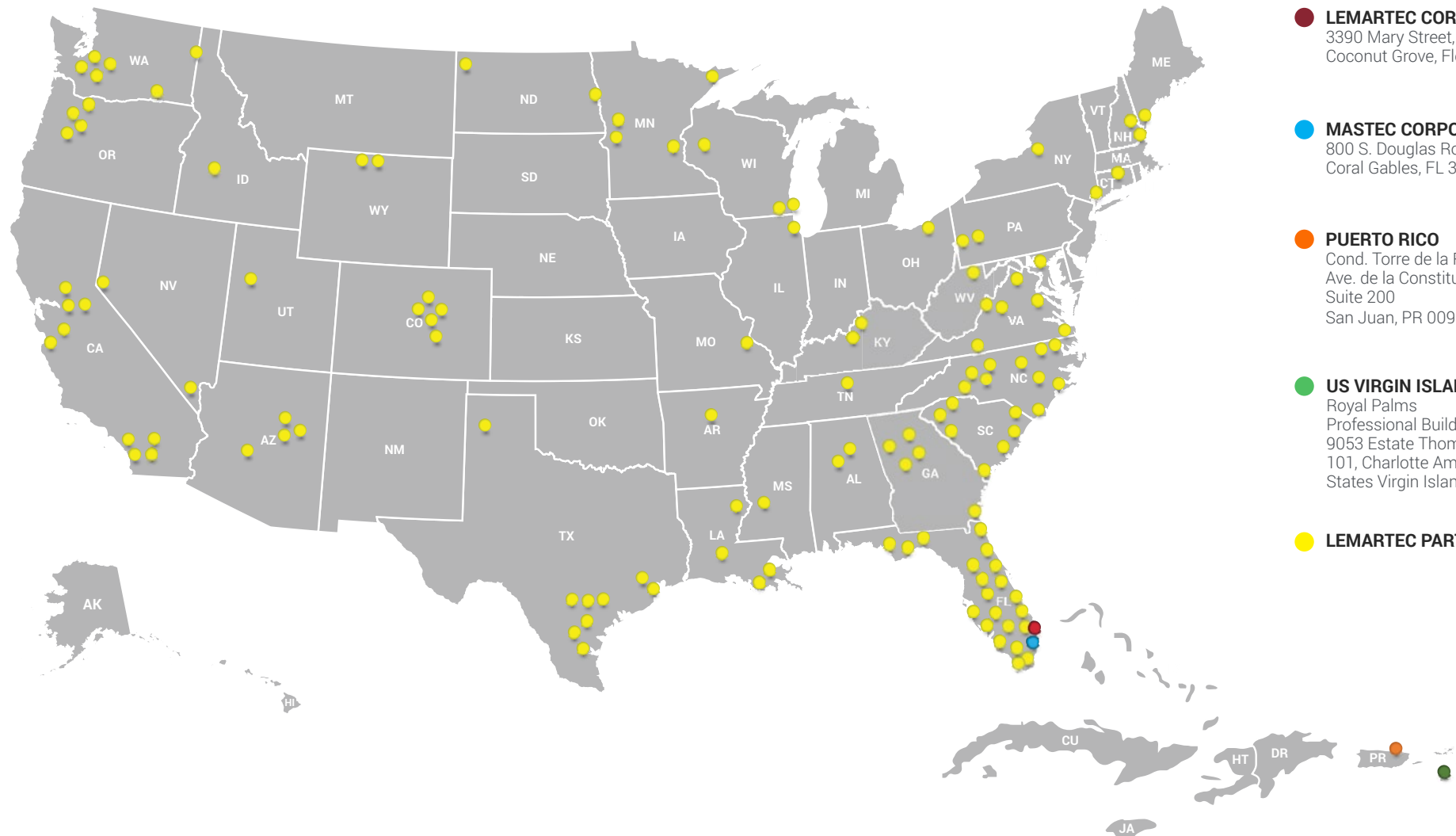
# Over 700 Locations Across North America and the Caribbean

Our Team is comprised of more than 700 locations and strategic partnerships across North America and the Caribbean. We ensure that the services we provide meet or exceed our clients' expectations. We comply with industry best practices and continually improve the effectiveness of our quality management system, delivering customized solutions to our clients in the markets we serve.



Licensed and Insured as Professional Engineers and General Contractors in multiple states and across the Caribbean.

# Minority Business Enterprise



MasTec is currently certified as a Minority-Controlled Company by the National Minority Suppliers Development Council (NMSDC).

This certification allows MasTec, and its subsidiaries, to be recognized as a minority contractor throughout the United States and across a range of industries.



**NMSDC CORPORATE PLUS<sup>®</sup> MEMBER**





# Safety



## AT LEMARTEC, SAFETY ISN'T JUST A PRIORITY - IT'S A CORE VALUE

Safety is a mindset and an attitude that all Lemartec employees carry with them daily. Lemartec is committed to continuous improvements in safety with a common goal of zero injuries, as well as taking an active part in initiatives that include development of “Best Practices” and training programs. Lemartec believes that a focus on environmental stewardship and innovation is paramount to everything we do. We work to stay at the forefront of safety and environmentally responsible construction, and to implement the application of these concepts throughout each project.

Lemartec has built a respected reputation in the construction industry through years of hard work, earned trust, and by instilling a safety culture in every single person that's part of our professional family. This safety culture is entrenched in our Think SAFE, Act SAFE, Be SAFE philosophy. A strong message that resonates in each and every project we take part in and that has shown results we can be proud of.

Moreover, our construction personnel is trained and certified in required safety programs including OSHA 10/30 hour, CPR, first aid and specialized training such as aerial lift training & job hazard analysis, from Project Executives to Project On-site Superintendents. The team holds weekly safety meetings on-site, toolbox talks, and ensures a properly branded site with a project-specific safety plan.



Lemartec field personnel are required to carry valid OSHA 30 certifications, demonstrating their comprehensive understanding of workplace safety standards. This certification ensures that employees have basic knowledge of OSHA regulations and applicable codes, enabling them to effectively implement and maintain safety procedures on job sites, thereby reducing risks and promoting a safer work environment.



# Awards & Recognitions

## NOTABLE ACHIEVEMENTS AND RECOGNITIONS FROM THE INDUSTRY

- **SFAGC Build Florida Award, Category: Transportation Under \$99M: Embassair FBO Hangar Terminal at Miami-Opa-Locka Executive Airport (2024)**
- **SFAGC Build Florida Award, Category: Athletic Facility (\$10M-\$75M): Baptist Health IcePlex (2024)**
- **SFAGC Build Florida Award, Building New \$10M-\$75M (Marine Facility South Florida): Grove Bay Marina Mixed-Use Hangars (2023)**
- **SFAGC Build Florida Award, Building New \$10M-\$75M (Transportation South Florida): Brightline Aventura Station (2023)**
- **SFAGC Build Florida Award, Building New Under \$10M (Religious Use Facility South Florida): Our Lady of Belen Chapel (2023)**
- **ENR SouthEast, Award of Merit - Cultural/Worship: Our Lady of Belen Chapel (2023)**
- **SFAGC Build Florida Award, Florida's Best Category: Design-Build over \$150M: PortMiami Terminal F Expansion (2023)**
- **MBCEA, Carolinas Chapter - Building of the Year Winner: PortMiami Terminal F Roof Retrofit (2023)**
- **ABC, Florida East Coast Chapter- Eagle Award Winner: PortMiami Terminal F Expansion (2023)**
- **ABC, Florida East Coast Chapter- Eagle Award Winner: Our Lady of Belen Chapel (2023)**
- **ABC, Florida East Coast Chapter- Pyramid Award Winner: Brightline Aventura Station (2023)**
- **ABC, Florida East Coast Chapter- Pyramid Award Winner: Grove Bay Marina Mixed-Use Hangars (2023)**
- **MBCEA, Carolinas Chapter - Building of the Year "Transportation Division" Winner: Bombardier Aircraft Maintenance Facility (2022)**
- **VP Buildings, Best of Category in "Transportation" Winner: PortMiami Terminal F Provisioning Building (2022)**
- **VP Buildings, Best of Category in "Miscellaneous" Winner: Autonation DRV PNK Stadium (2021)**
- **VP Buildings, Best of Category in "Warehouse" Winner: Dunham Bush Manufacturing and Storage Facility (2020)**
- **VP Buildings, Best of Category in "Recreation" Winner: University of Miami, Carol Soffer Indoor Football Practice Facility (2019)**
- **US. Department of Commerce: Southeast Region Top Minority Construction Firm of the Year (2018)**



# Our Sustainability Commitment Includes Environmental Stewardship

MasTec's sustainability principles and practices are embedded within our strategy, risk management and day-to-day operations. In 2020, MasTec formalized sustainability as part of our Board oversight function, as well as our policies on Human and Labor Rights and Safety, Health and Environmental matters. We engage with our stakeholders, both internal and external, to understand priority sustainability issues for our business and the world at large. The MasTec companies are all dedicated to the development of our sustainability framework, as well as our engagement and innovation because we understand that sustainable solutions are our responsibility.

We believe that we all play a role in environmental stewardship. We help our customers find solutions to their environmental goals and requirements and are likewise committed to responsibly managing the environmental impacts of our operations. Our customers rely on our expertise with governmental and regulatory agencies to meet increasingly stringent regulatory requirements. Environmental matters are an integral part of our business planning and decision-making processes. Our corporate policies and Code of Business Conduct and Ethics require that all applicable environmental regulations and compliance requirements are met in the course of our operations. Our planning processes incorporate procedures to ensure compliance with all such laws and regulations.

**MasTec**

**COMMITTED TO SUSTAINABILITY**



"As one of the largest clean energy contractors in the country, MasTec's expertise in constructing wind farms, solar farms, biomass facilities, high-voltage transmission lines, substations, battery storage and hydrogen-enabled solutions uniquely position the company to take advantage of the growth in this market."

- Zacks Equity Research

# Community Involvement

The MasTec family of companies takes great pride in serving the communities within which we live and work. As a member of the Miami-Dade business community for over 40 years, we contribute to the economic growth and well-being of the County and its residents, including support of the United Way of Miami-Dade and by thousands of volunteer hours contributed each year by our employees. Lemartec is inspired by this same philosophy, actively supporting various events and causes throughout our local and regional offices in the Caribbean.



In 2019, the Tocqueville Society contributed \$15 million to support the Miami-Dade community through United Way, which represented 40 percent of the overall annual campaign, and it contributed \$14 million in 2018.



Incorporating Miami-Dade County certified Small Business Enterprise (SBE) firms on our projects, notwithstanding formal goals being in place. For example, Lemartec's Design-Build Services Contract for Cruise Terminal F Expansion and Berthing Re-Alignment Program, allocating over to \$12 Million to certified firms.





# MasTec Proves the Power of Diversity

At MasTec, we believe our greatest asset is our people, and we work hard to provide a diverse and inclusive corporate culture. As the company has grown, MasTec has focused less on day-to-day operations and more on setting the strategic vision and refining the corporate culture. Having our employees focused on the same goals and ideals is paramount. Our workers want to understand how they make a difference, and how their daily efforts improve the company. Therefore, creating the right culture and atmosphere is central.



**HispanicBusiness**  
**500**  
LARGEST US HISPANIC-OWNED COMPANIES

*“MasTec is the second-largest Minority - Controlled company in the United States, with more than 22,000 employees. In 2018, the company generated revenue of more than \$7 billion, earning it entry into the Fortune 500 – the first minority business enterprise to earn this distinction.”*

# Lemartec’s Diversity in Management

“Diversity should **always** have a seat at the table.”  
- Manuel R. Garcia-Tuñon

The diversity of Lemartec’s workforce helps us serve our increasingly diverse customer base and the communities in which our customers live and work. We believe employees who offer a wide variety of ideas and perspectives give us a competitive business advantage in the marketplace. We expect everyone to recognize, respect, and value that there are differences among all of us. As such, Lemartec believes that setting the example in diversity starts with its leadership. Our Senior Management team represents a plethora of backgrounds which, together, adds to the company’s culture of inclusivity.



**Manuel R. Garcia-Tuñon**  
President



**Kurt Dyer**  
Sr. Vice President of Operations



**Maira Suarez**  
Vice President of Strategic Partnerships



**Anthony Feoli, CPA, CMA**  
Chief Financial Officer



**Lynn Harwood**  
Vice President of Building Systems Division



**Lindsay Levin, Esq.**  
Vice President & Senior Legal Counsel



**Jose Garcia-Tuñon**  
Sr. Vice President of Commercial Services



**Don Moore, MBA**  
Director of BSD Operations



**Jenny Pino**  
Director of Human Resources



**Robert Caicedo**  
Director of Marketing & Communications



**Francisco Pau**  
Director of Estimating



**David Mcfarlane**  
Director of Strategic Partnerships - Mission Critical



**John Ugarte**  
Project Executive



**Michael Smith**  
Project Executive



**Sebastian Gomez**  
Project Manager



**Felix Camacho**  
Project Director



# Design-Build

From the initial client meeting through building occupancy and beyond, our professionals work with our clients and design partners to identify their project goals and objectives, schedule requirements, and budgetary parameters. Ultimately, we develop a holistic and symbiotic approach that is sensitive to the individual considerations of the client and their project, and which reflects and advances their mission.

01 PROJECT CONCEPTION

02 PRELIMINARY DESIGN

03 FINAL PROJECT DESIGN

04 SITE WORK & STAGING

05 CONSTRUCTION & EQUIPMENT INSTALLATION

06 PROJECT CLOSE-OUT

07 COMMISSIONING OPERATIONS & WARRANTIES

08 PROJECT COMPLETION

“Understanding Our Client’s Processes as they relate to our design-build approach, has served as the **cornerstone** of our success.

- Manuel R. Garcia-Tuñon



## Single Source of Accountability

The design-build approach provides a single source for your entire project. In the classic design-bid-build method the owner must; select an architect / designer, finalize the design, bid the project, select a contractor, and then act as an intermediary. The design-build method fosters teamwork and lends itself to cooperation. The relationship built during the design phase helps to ensure that the stage is set for a successful construction project.



## Faster Project Completion

Design-build projects can be completed in a shorter amount of time because: bid time is reduced, scheduling for the project can begin before design is finalized, potential construction problems are uncovered early and enhanced communication keeps everything moving.



## Budget Management

Discussing budget during the design phase (not waiting until the bids come in) helps to keep the projects within a realistic budget. Communicating the cost implications of design decisions ensures that the owner plays a key role in arriving at the final project price. The design-builder manages a “competitive bid process” for the owner at the subcontractor and supplier level to ensure the most competitive price for every trade. Once the scope of work has been finalized, the project costs are clearly defined and controlled by the design-build firm.



## Quality Control

The design-build method helps to remove ambiguity that may arise in material and construction specifications. Since the designer, engineer and builder are from the same firm, the focus remains on protecting the client’s interest. Because of its inherent flexibility, design-build lends itself well to a variety of project types. By combining design and construction experience onto one team, the owner realizes the benefits of “one-stop-shopping” at its best.



## Enhanced Communication

Specific design and construction details are being developed throughout the entire process and the focus stays on owner “value”. The communication benefits of working with a construction expert and design professional at the same time ensures that potential problems are discovered before the project starts, reducing execution risk.



# Unique Expertise

## Steel Building Systems

As a leading steel design and construction company, we have served public and private clients for their facility construction needs for over four decades, focusing in projects with commercial or industrial applications. It is through our “tip of the spear,” in-house engineering team specialized in metal buildings that our company can bring value and help you resolve the challenges you may be facing.

Though the synergies established with our manufacturer, we have access to important design technologies that can speed up the process of estimating the cost of a pre-engineered, conventional or a hybrid steel solution.

We have built Aviation MRO’s and Hangars, Indoor Practice Facilities, Heavy Industrial Plants, and more. Because we have self-performing capabilities to furnish and erect steel structures, not only owners and end-users recur to Lemartec, but also major contractors seeking to release turn-key construction packages as part of a larger project or program.

### BUILDING SYSTEMS LEADERSHIP



LYNN HARWOOD | VICE PRESIDENT, BUILDING SYSTEMS DIVISION

A civil engineer by profession, Mr. Harwood’s career and contribution to the steel manufacturing, design and construction industries spans over 32 years. Mr. Harwood joined Lemartec to lead and grow the company’s Building Systems division and enhance our world-class services in steel engineering and construction, all of which are put to the service of federal, public and private sector clients, and end-users in North America and abroad. With an unparalleled expertise in steel, Mr. Harwood can expeditiously identify and value engineer some of the most critical elements affecting cost and schedule on a project. Having Mr. Harwood as part of the team signifies that clients and end-users alike will benefit from higher returns on their investment and speed to market.



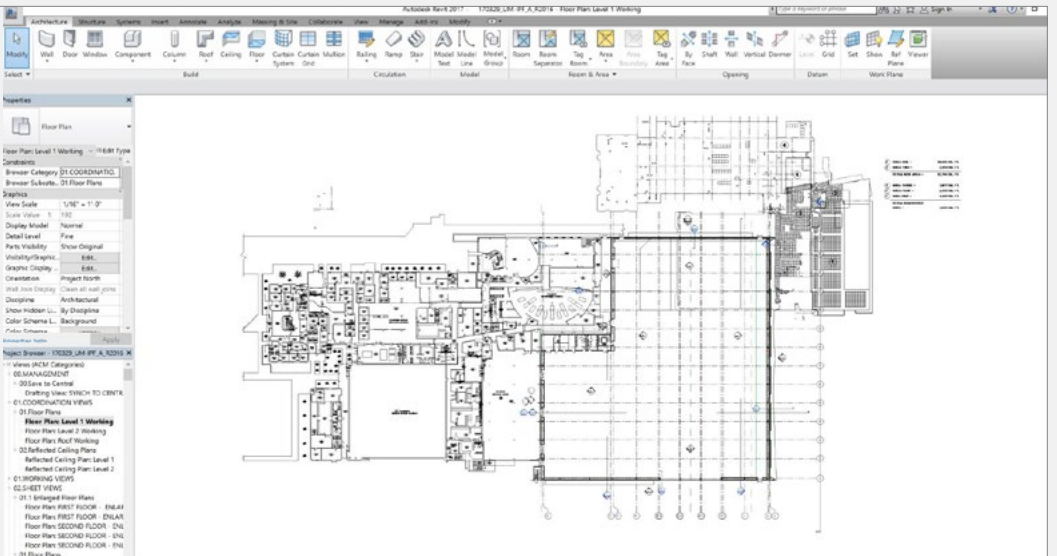


# BIM Expertise with the power of AI

Lemartec's Building Systems Division utilizes **Building Information Modeling (BIM)** tools to facilitate better collaboration among stakeholders on a project. The team drives performance in the field and enables our on-site Project Managers, Project Field Engineers, Project Superintendents, and other field personnel to deliver highest quality on-time and within budget. The fact that we are a Design-Build firm with BIM capabilities in-house maximizes your return on investment, as our group collaborates with our design and steel manufacturing partners to create a fully integrated model and identify design conflicts, building fabrication errors, and omissions prior to construction.

Our engineers use best practices and techniques and the latest softwares including, but not limited to:

- AutoCAD
- Revit
- RISA
- Navisworks
- Sketchup
- VP Command



With the aid of BIM as an initial planning and program validation tool, the construction process results in:

**Enhanced Quality**  
BIM allows constructability reviews to happen during the design phase. A clash-free BIM model ensures our team can prefabricate and install all building systems correctly the first time.

**Flawless Execution**  
BIM eliminates costly rework during the construction phase and keeps the schedule progressing. BIM allows for more efficient use of material, labor, and pre-fabrication planning, reducing schedule timelines.

**Cost Savings**  
BIM-based constructability reviews and clash detection avoid rework, and identifies any structural and architectural conflicts that may result from major equipment sizing and orientation. BIM increases prefabrication and captures its cost benefits.

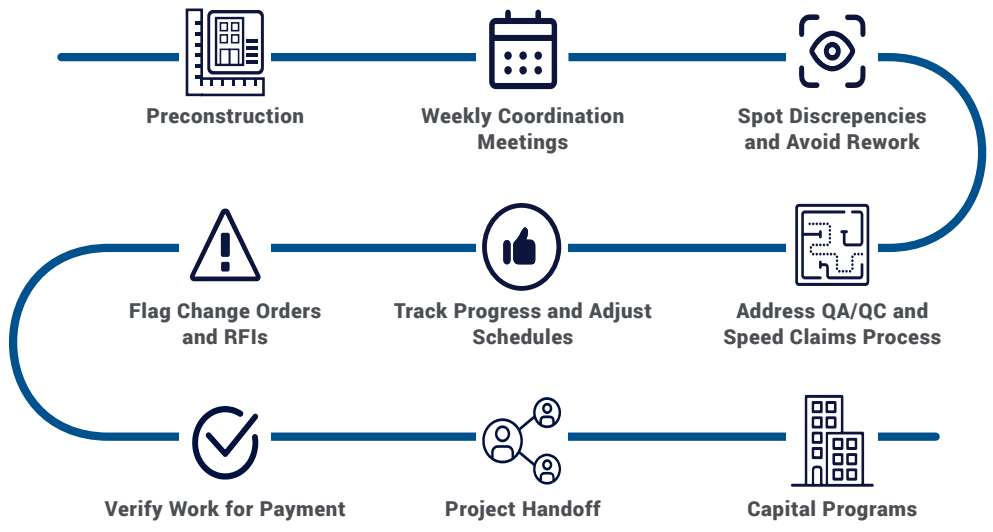


PortMiami, Cruise Terminal F Expansion and Berthing Re-Alignment Design/Build



**We Capture the construction site with OpenSpace AI Technology**  
OpenSpace is the global leader in reality capture and AI-powered analytics for builders, empowering them to quickly capture a comprehensive visual record of their jobsites. The OpenSpace Vision Engine maps photos to the site plans automatically. From there, we get a complete, as-built record of the building from preconstruction to handover and operation.

OpenSpace increases visibility at every stage of construction:



**The OpenSpace Difference**

**Complete Capture Made Easy**  
AI-powered software captures sites with unmatched speed and simplicity. Capture 150,000 square feet per hour— lightning fast, and hands-free. Get a live, as-built record from preconstruction to handover and operation.

**Integrations and Scalability**  
OpenSpace is compatible with iOS and Android devices and they integrate with tools such as Procore, PlanGrid, Autodesk BIM 360, and more.

**Streamlined Workflows**  
Enable better communication, faster decisions, and more precise scheduling by eliminating manual photo documentation, easily assigning field notes with complete visual context, and using shared folders to provide relevant OpenSpace data with stakeholders.

**Real-Time Project Visibility**  
OpenSpace's Vision Engine automatically maps images to floor plans and within 15 minutes on average, anyone anywhere in the world can virtually walk through your site—as easy to navigate as Google Street View.

**Better Coordination**  
OpenSpace provides a shared, visual record that equips field, office, and VDC teams to quickly identify and solve problems. Easily compare asbuilt conditions to the design intent, coordinate clearly, and eliminate unnecessary back and forth to keep the job moving.

**Superpowers Enabled**  
Pull up a split screen and compare BIM to as-built, travel back in time, and see through walls, slabs, and ceilings.



# Value Engineering Advantage

Lemartec offers value engineering and analysis that are unmatched in the industry. Value Engineering is a systematic and structured approach for improving projects, products and processes. It is used to analyze and improve design and construction projects to achieve an optimum balance between function, performance, quality, safety and cost. The proper balance results in the maximum value for the project.



## COST REDUCTION

Suggestions of less expensive alternatives to specified materials or systems.



## VALUE ADDED

Higher quality products that will increase value for the client and overall satisfaction with the project.



## LIFE-CYCLE ANALYSIS

Options that work to create a balance between initial construction costs and the longterm operational budget of the development.

## VALUE ENGINEERING SUCCESS STORY: DUNHAM BUSH NEW MANUFACTURING AND STORAGE FACILITY

*This 99,912 SF project was designed for tilt-up concrete panels with metal joists, decking and a conventional rubber roof. As a value engineering approach, Lemartec suggested a hybrid alternative that combined conventional steel with pre-engineered steel members.*

*Lemartec also analyzed the cost and life-cycle of a 20-year structural standing seam roof which would accommodate the inclusion of PRISMAX, allowing for more natural light. This approach would provide additional cost savings over the lifetime of the building.*

*This is the first project in South Florida to utilize a hybrid structural framing approach with concrete tilt-up construction and a structural standing seam roof system. No other bidder was able to perform this level of analysis. Due to Lemartec's exclusive in-house engineering capabilities and internal Building Systems group, the project was delivered under the clients' budget and schedule.*





# Our Strategic Partner

## VP Buildings



Varco Pruden (VP) Buildings is a world leader in providing innovative pre-engineered steel building systems. Each year, VP supplies approximately 6,000 buildings ranging from 1,200 square feet to more than one million square feet under roof. With headquarters in Memphis, Tennessee, and manufacturing and service centers located from coast to coast, they provide buildings throughout North America.

Varco Pruden Buildings specializes in the computer-aided design of steel & pre-engineered metal building systems construction. Through the use of the company's advanced engineering programming, Varco Pruden combines steel structural materials with virtually any exterior finish to create metal buildings that are energy efficient and provide years of trouble-free performance.



Thompson S Baker Cement Plant - Newberry, FL (Courtesy of VP Buildings)

PARTNERSHIP WITH  
VP BUILDINGS -  
**A SOLID RELATIONSHIP  
FOR OVER 35 YEARS**



Roquette America, Inc., Co-Generation Facility - Keokuk, IA (Courtesy of VP Buildings)

**Lemartec, together with Varco Pruden, is the ultimate building solution for your steel construction, metal building, and hybrid construction needs.**



Front Street Shipyard, Belfast, ME (Courtesy of VP Buildings)



# Our Strategic Partner

## American Buildings

AUTHORIZED BUILDER



AMERICAN BUILDINGS

a NUCOR brand

American Buildings' custom engineered metal building solutions offer unsurpassed flexibility, speed of construction, superior structural strength, and innovative features — delivered on time.

By partnering with American Buildings, Lemartec offers clients the most versatile, energy-efficient and cost-effective building solutions on the market today. Whether you need 10,000 sf or 100,000 sf, from heated to unheated, strictly climate controlled or refrigerated, the configuration and expansion capabilities of our custom metal buildings are endless, making them the perfect solution for your new facility. American Buildings systems also utilize green building materials, which can help lower total operational costs, while other features or specialty equipment can be incorporated to increase your building's safety and performance. Plus, American Buildings' products are proudly made in the USA from steel that is over 70% recycled, so you can reduce waste and feel good about your choice to use an American Buildings metal building.

Lemartec is committed to providing our customers with the best possible products and services, and that's why we use American Buildings.

At Lemartec, every project is custom-designed and fabricated by our partner, American Buildings, to meet our customers' unique needs.



Baptist Health IcePlex



# Unique Expertise

## Commercial/Retail/ Interior Finishes

We treat every project as if it were our only one, because we understand how important it is for our clients to differentiate themselves within their industries. Our professionals offer a true turn-key solution that includes a deep understanding of how your brand is reflected in the work we do, all while providing the highest quality of detail and client service that help you take care of what you do best.

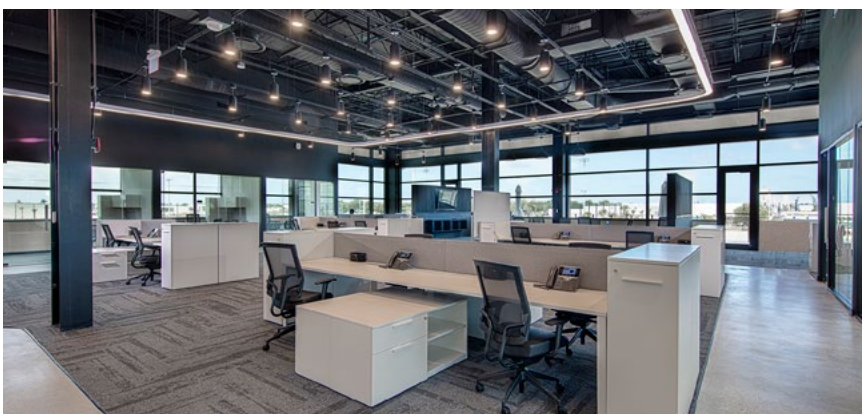
You need a contractor that knows how to work together with your architect from the beginning to identify design elements that will have significant cost implications on your project and to offer you the most economical and aesthetically pleasing solution. From value engineering, cost control estimates, schedule and constructability analysis, to alternate methods and materials studies, the result is efficiency, quality, and long-term relationships with our clients. Lemartec's highly skilled team of professionals are ready to meet all your projects requirements.





EXPERIENCE | CHASE STADIUM AND TRAINING FACILITIES

**2021**  
**BEST OF CATEGORY IN "MISCELLANEOUS" WINNER**  
Varco Pruden (VP) Buildings

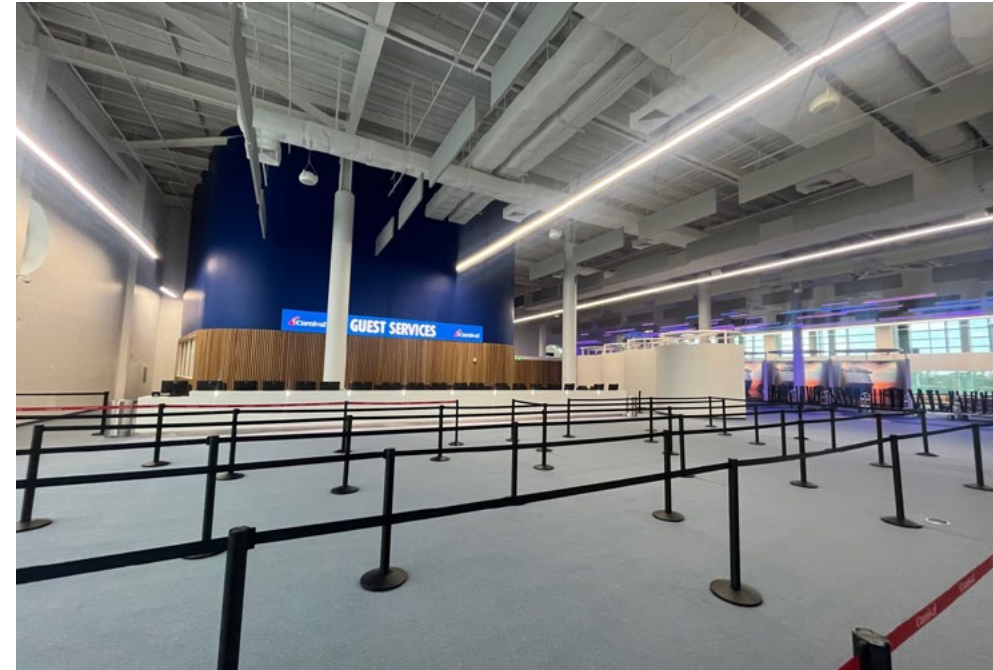
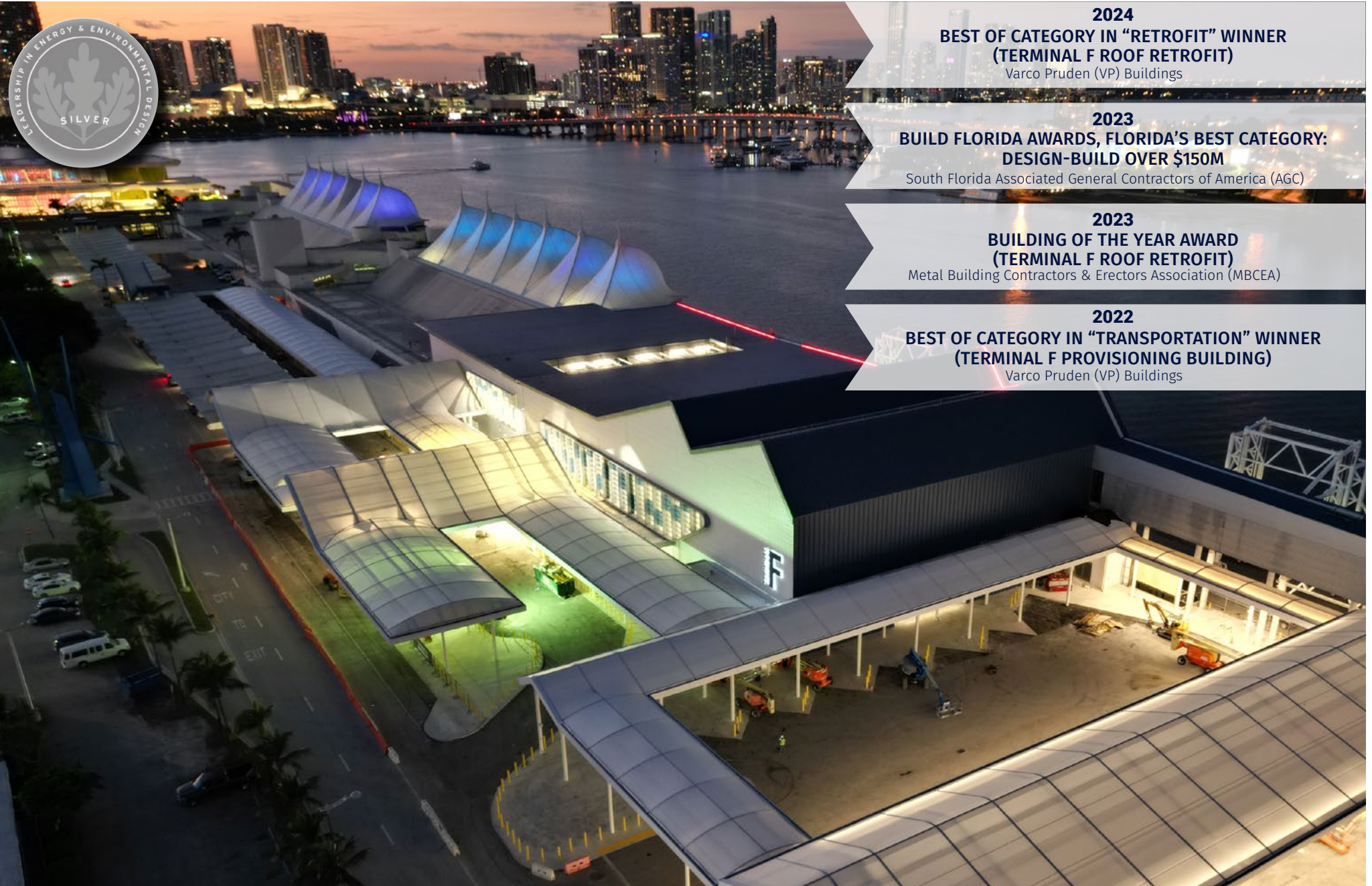




EXPERIENCE | **BAPTIST HEALTH ICEPLEX**

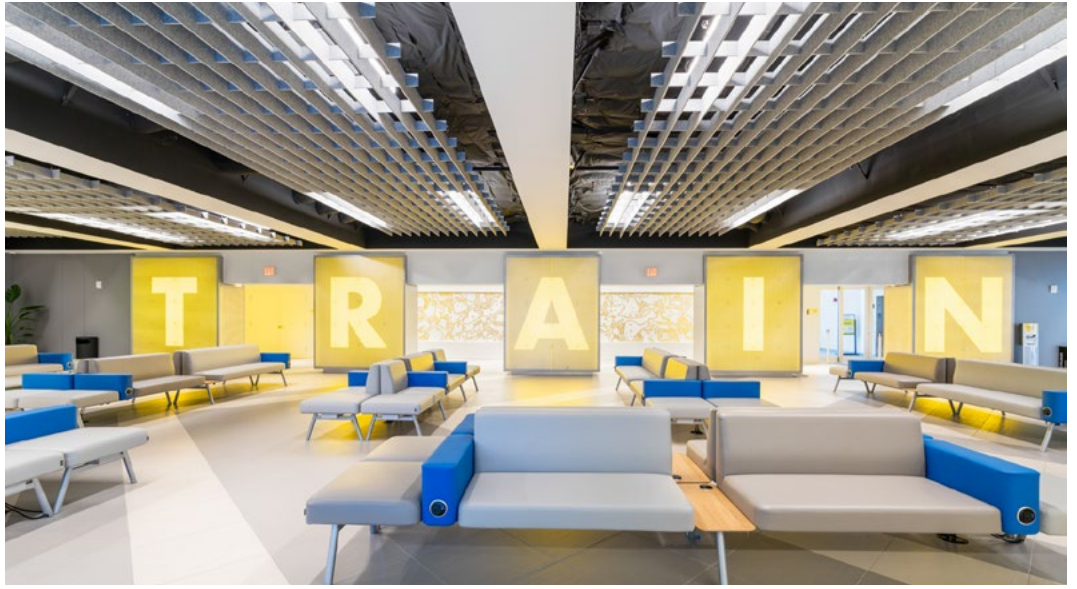








**2023**  
**BUILD FLORIDA AWARDS, BUILDING NEW \$10M-\$75M**  
**(TRANSPORTATION SOUTH FLORIDA)**  
South Florida Association of General Contractors (AGC)





EXPERIENCE | **EMBASSAIR FBO HANGAR TERMINAL AT MIAMI-OPA-LOCKA EXECUTIVE AIRPORT**

**2024**  
**BUILD FLORIDA AWARDS**  
**CATEGORY: TRANSPORTATION UNDER \$99M**  
South Florida Association of General Contractors (AGC)





**2022**  
**BUILDING OF THE YEAR "TRANSPORTATION DIVISION" WINNER**  
Metal Building Contractors & Erectors Association (MBCEA) Carolinas Chapter





EXPERIENCE | VIRGIN ISLANDS PORT AUTHORITY PROGRAM MANAGEMENT SERVICES





EXPERIENCE | LEMARTEC CORPORATE OFFICE AT MAYFAIR



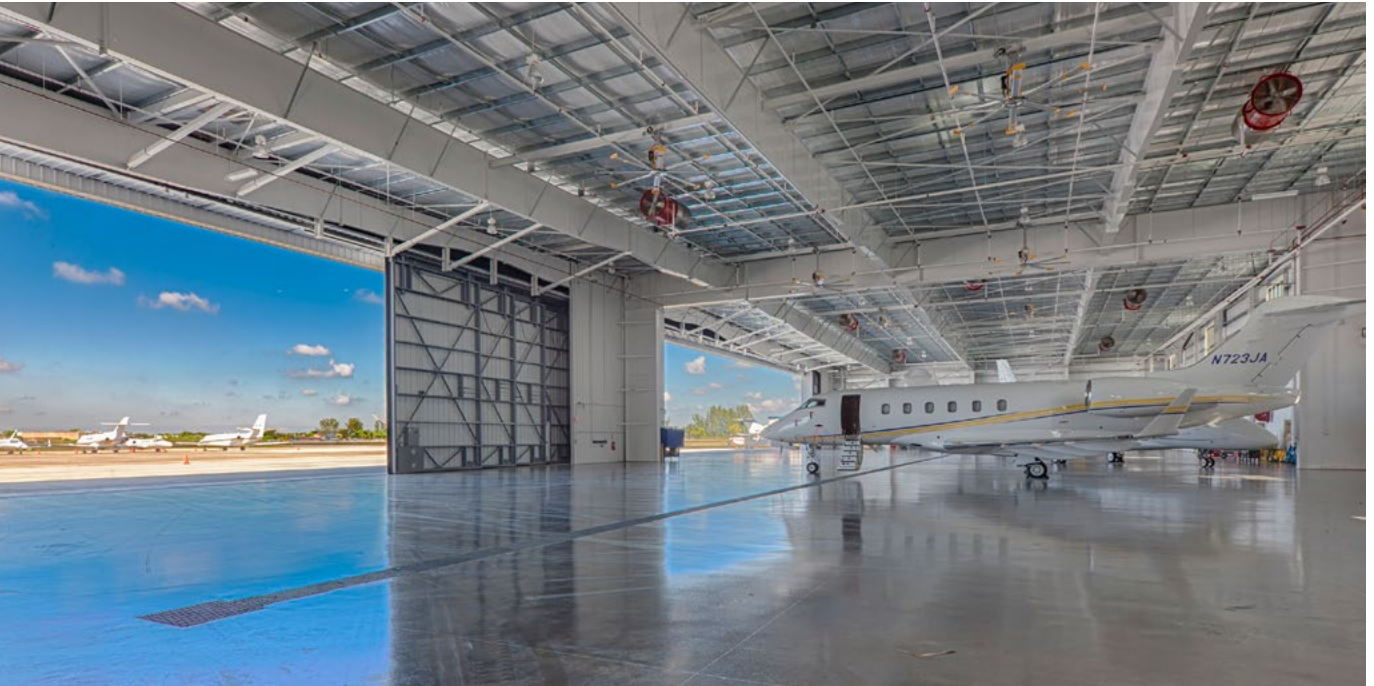


EXPERIENCE | SOUTH FLORIDA CONTAINER TERMINAL ADMINISTRATION OFFICE BUILDING & SERVICE STATION





EXPERIENCE | **ORION JET CENTER HANGARS**



“  
... Orion Jet Center is pleased with the quality of the Varco Pruden metal buildings and the coordination between VP and Lemartec. The construction was on schedule and within budget.  
  
I highly recommend Lemartec for any similar aviation projects.  
  
Eric Greenwald, President  
Orion Jet Center





EXPERIENCE | LAN CARGO MAINTENANCE FACILITY & OFFICE BUILDING AT MIAMI INTERNATIONAL AIRPORT

2016  
BUILDING OF THE YEAR WINNER  
Metal Building Contractors & Erectors Association (MBCEA)



“  
LATAM AIRLINES GROUP is... extremely satisfied with the quality of the VP building. We are impressed by the flawless production and project coordination between VP and Lemartec Corporation. Lastly, the most important accolades are they completed the project on time... I highly recommend the Lemartec Corporation for any aviation construction/development projects.  
Martin A. Donnari, VP of Maintenance & Engineering  
LAN Cargo, S.A.





EXPERIENCE | LANDMARK AVIATION - OPF HANGAR



“  
Lemartec [ ] was the design/build contractor of our new 45,623 sq. ft. corporate hangar. [ ] We are impressed by the flawless production and project coordination between VP and Lemartec. Lastly, the most important accolades are the construction completion in nine months and project completion within budget. I highly recommend Lemartec [ ] for any aviation development projects.

Fabio V. Alexander, CEO  
Miami Executive Aviation





EXPERIENCE | **SIGNATURE FLIGHT SUPPORT HANGAR**





EXPERIENCE | **FRESH MARKET HISTORIC RESTORATION**



BEFORE



AFTER



Lemartec is proud to be part of the restoration and retrofit of Grove Bay Marinas historic U.S. Naval Hangars that were used in the early 1900's. These hangars serve as a historic landmark in South Florida and were originally part of the U.S. Naval Air Station that officially opened in 1917 and later used by Pan Am Airlines to store their sea planes that flew back and forth between Florida and the Caribbean. With the help of Lemartec's specialized restoration team and partnerships with specialty subcontractors, these hangars still stand tall restored and retrofitted with new purpose, while maintaining their historic integrity.







EXPERIENCE | FEDEX FREIGHT LOGISTICS CENTER & SHOP MAINTENANCE FACILITY





EXPERIENCE | **DUNHAM BUSH NEW MANUFACTURING AND STORAGE FACILITY**

**2020**  
**BEST OF CATEGORY IN "WAREHOUSE" WINNER**  
Varco Pruden (VP) Buildings



*This image features ZERO ARTIFICIAL lighting. Structural standing seam roof with the prismatic skylights (PRISMAX) result in very low energy consumption.*



EXPERIENCE | **SOUTHEASTERN RECYCLING FACILITY**



“  
On behalf of my family and everyone at Southeastern Recycling Corporation I would like to congratulate you on a job well done. [ ] Most importantly, you worked with us during the design phase to value engineer our project and meet our budget. During construction, your project management team was excellent as is reflected in the quality of your work. We are truly proud of our impressive, world-class facility. We appreciate Lemartec’s professionalism during the entire design-build process.  
John Szkolnik, CEO  
Southeastern Recycling Corporation



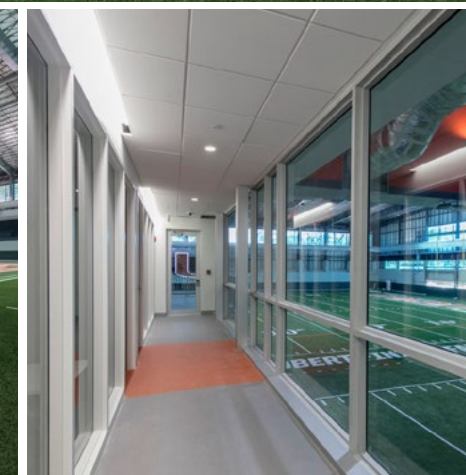
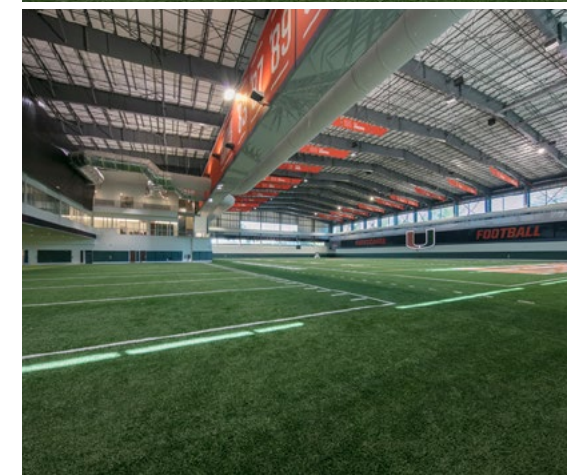
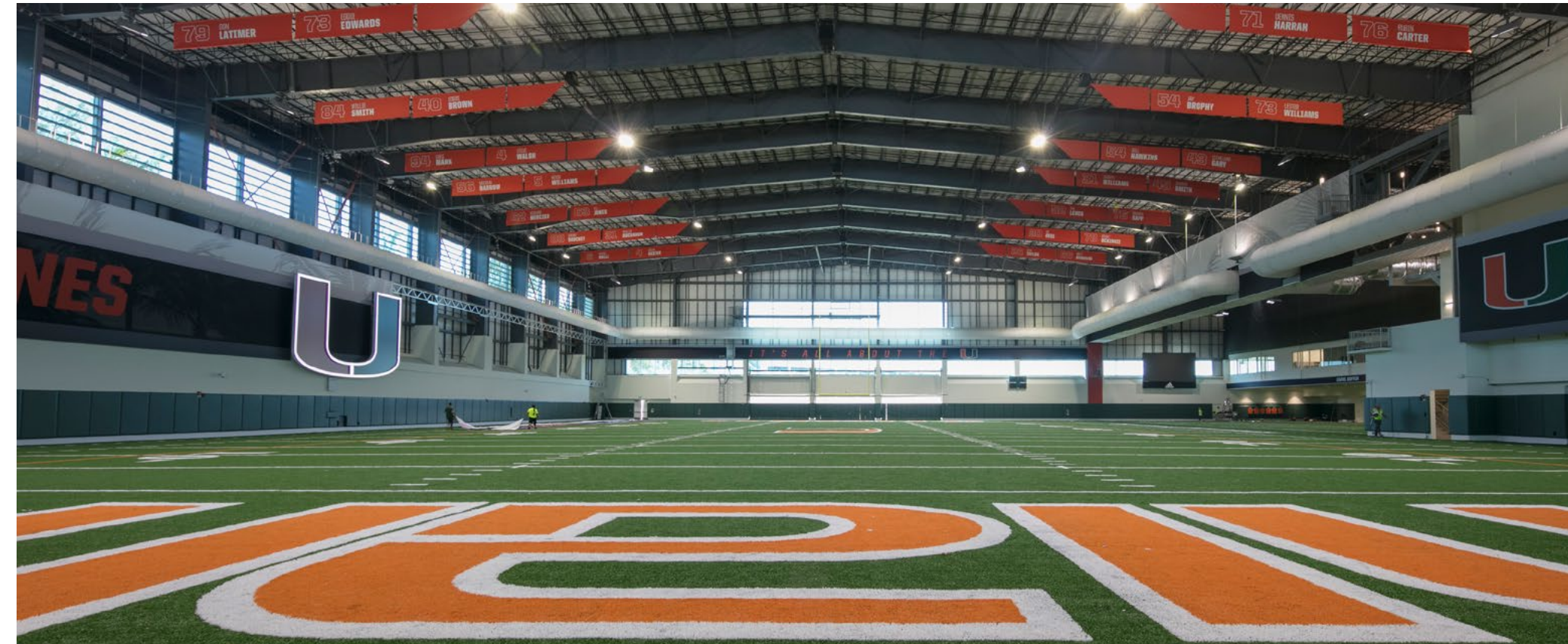


EXPERIENCE | SOUTH COUNTY TRANSFER STATION





EXPERIENCE | UNIVERSITY OF MIAMI, CAROL SOFFER INDOOR FOOTBALL PRACTICE FACILITY



“  
...my highest recommendation for the construction firm Lemartec. [ ] From the very beginning, I was most impressed by the overall communication on the project. [ ] Because of the tremendous communication, I was able to make changes along the way before it was too late. [ ] Lemartec has made sure that as their client all of our needs are met with the highest quality of workmanship. [ ] The professionalism and ethical standards that Lemartec has shown has been nothing but outstanding. **I feel very confident in recommending Lemartec for any construction project.**

Mark Richt, Former Head Football Coach  
University of Miami

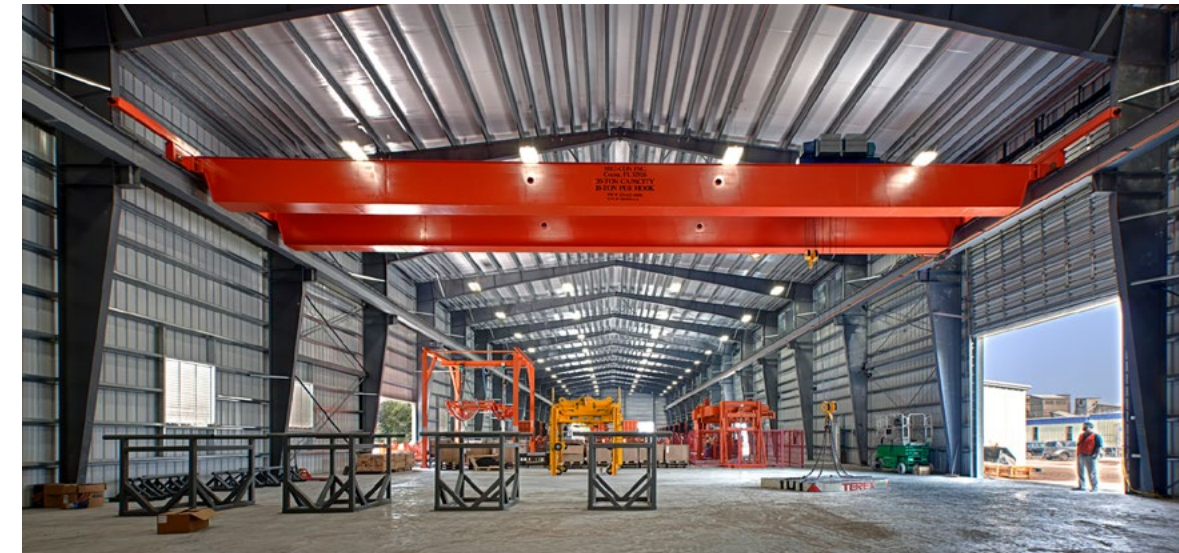


EXPERIENCE | ST. THOMAS UNIVERSITY GYMNASIUM





EXPERIENCE | **PORTMIAMI TUNNEL PRE-CAST FACILITY**



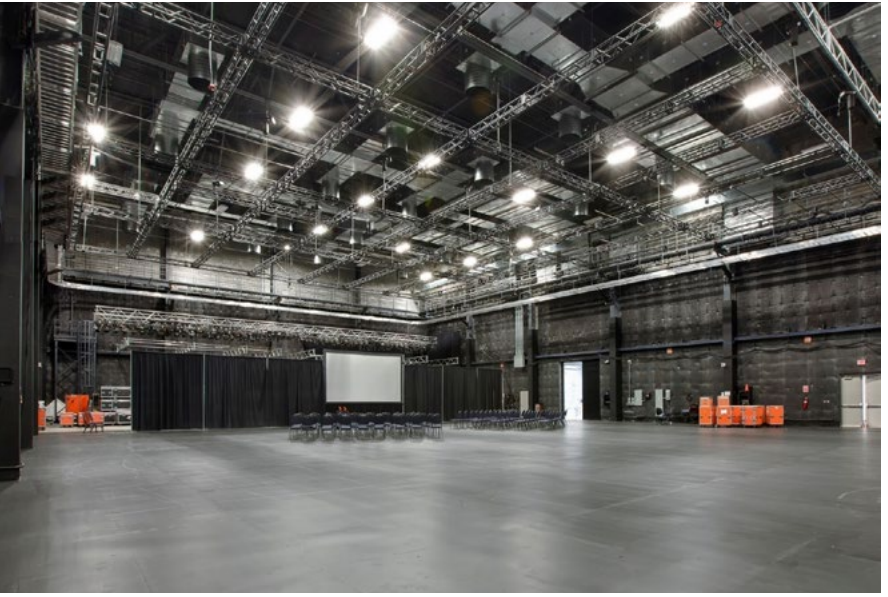
“  
It is with pleasure and confidence that I recommend Lemartec... for your next heavy industrial design-build project. [ ] We met with and interviewed several local firms, but after comparing qualifications of the teams, and their experience with in-house design for industrial projects, our choice was obvious. We knew Lemartec was our best choice. [ ] It takes a special know-how to turn-key design and build heavy industrial project under strict guidelines... Lemartec has the expertise which is why I am confident in recommending them.

Louis Brais, Project Executive  
Bouygues Civil Works Florida

”



EXPERIENCE | UNIVISION PRODUCTION STUDIOS





EXPERIENCE | PAVILION PROFESSIONAL OFFICE BUILDING





EXPERIENCE | TROPICAL PARK EQUESTRIAN CENTER



“ ... Lemartec did an excellent job of communicating with the owner’s representatives at all times and [ ] provided outstanding customer service. The quality of work met the contract specifications and the job was completed within budget. The original schedule was maintained due in great part to Lemartec Corporation’s ability to efficiently manage the work, and recover time lost due to extraordinary weather conditions and increased work scope. Based on our experience working with Lemartec on this project, we recommend the firm for any future projects that consist of a similar work scope.

Jorge Mora, Chief, Design, Construction and Maintenance, Capital Programs Division  
Miami Dade Parks Recreation and Open Spaces Department



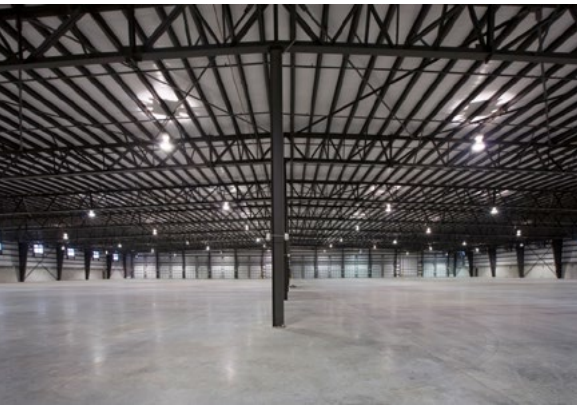
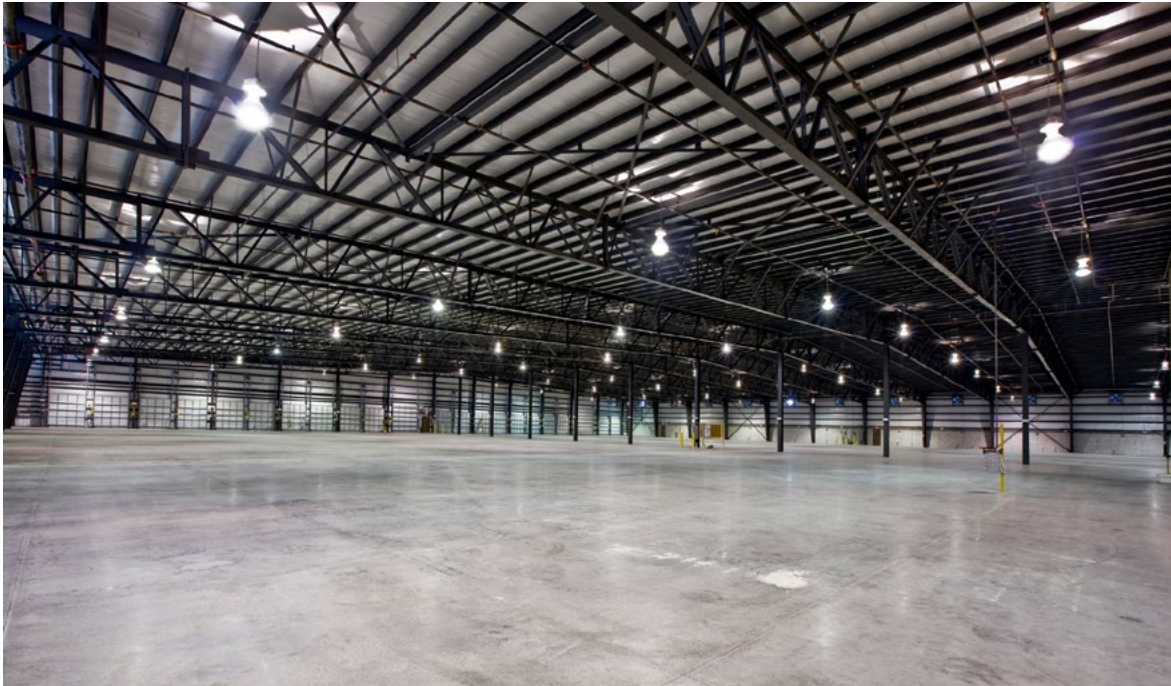
EXPERIENCE | **FLAMINGO PARK RECREATIONAL FACILITY**



“  
Lemartec was awarded a contract to supply and install the Pre-engineered Metal Building for the Flamingo Park Improvements Project [ ] which was completed on-time and within budget. Lemartec’s Team is knowledgeable, cooperative, proactive and focused. Their attention to detail in all matters of safety, staging and traffic flow ensured a successful project, with zero incidents. [ ] Lemartec’s team of professional includes some of the best in their field and have shown high degree of motivation and perseverance throughout this endeavor.  
Michael R. Boss, President  
MBR Construction



EXPERIENCE | **SHOW MANAGEMENT STORAGE FACILITY**





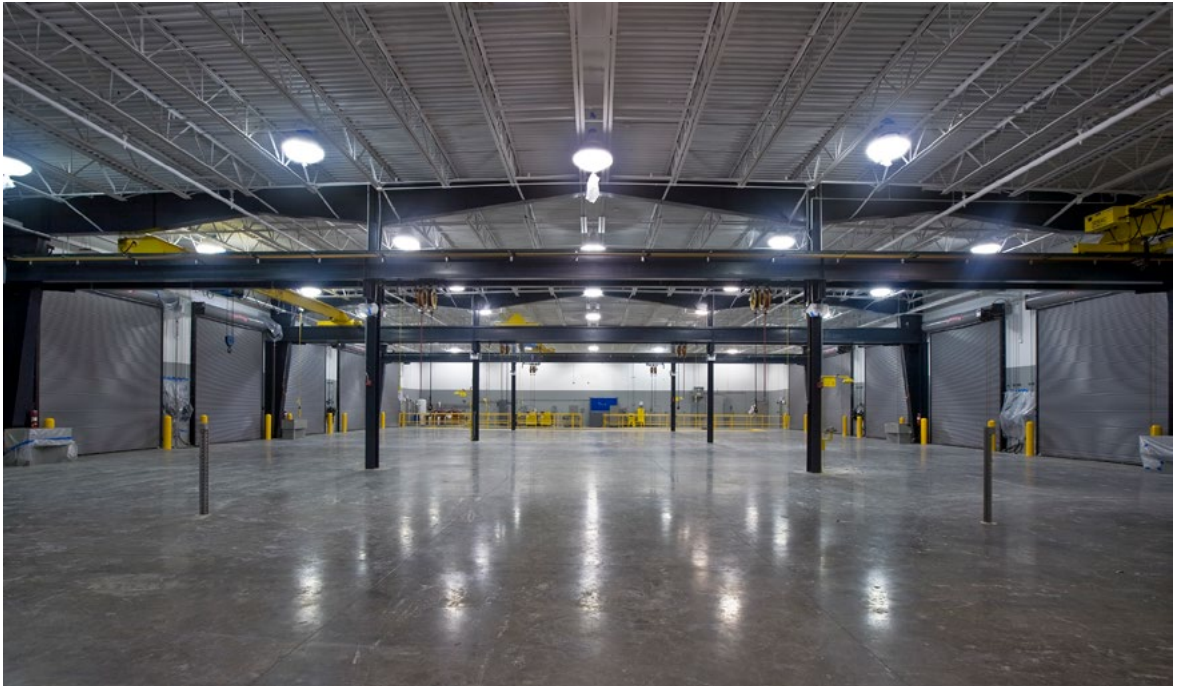
EXPERIENCE | PULP & PAPER PROCESSING PLANT



From left to right, top to bottom: Palm Meadows Compost Facility, SWA Recycling Facility, SWA Recycling Facility, Lee County Transfer Station



EXPERIENCE | **PANTROPIC POWER FACILITY**





EXPERIENCE | **CHEMTEX JUMBO ADMIN CONTROL & PET BUILDING**





EXPERIENCE | CHLOR-ALKALI PROCESSING PLANT



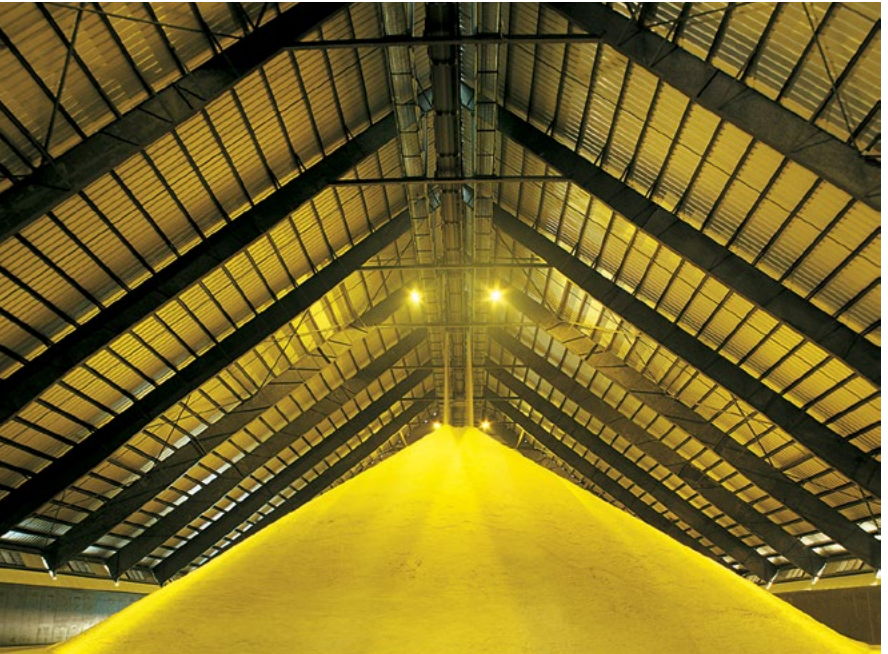


EXPERIENCE | **OKEELANTA SUGAR PROCESSING WAREHOUSE**



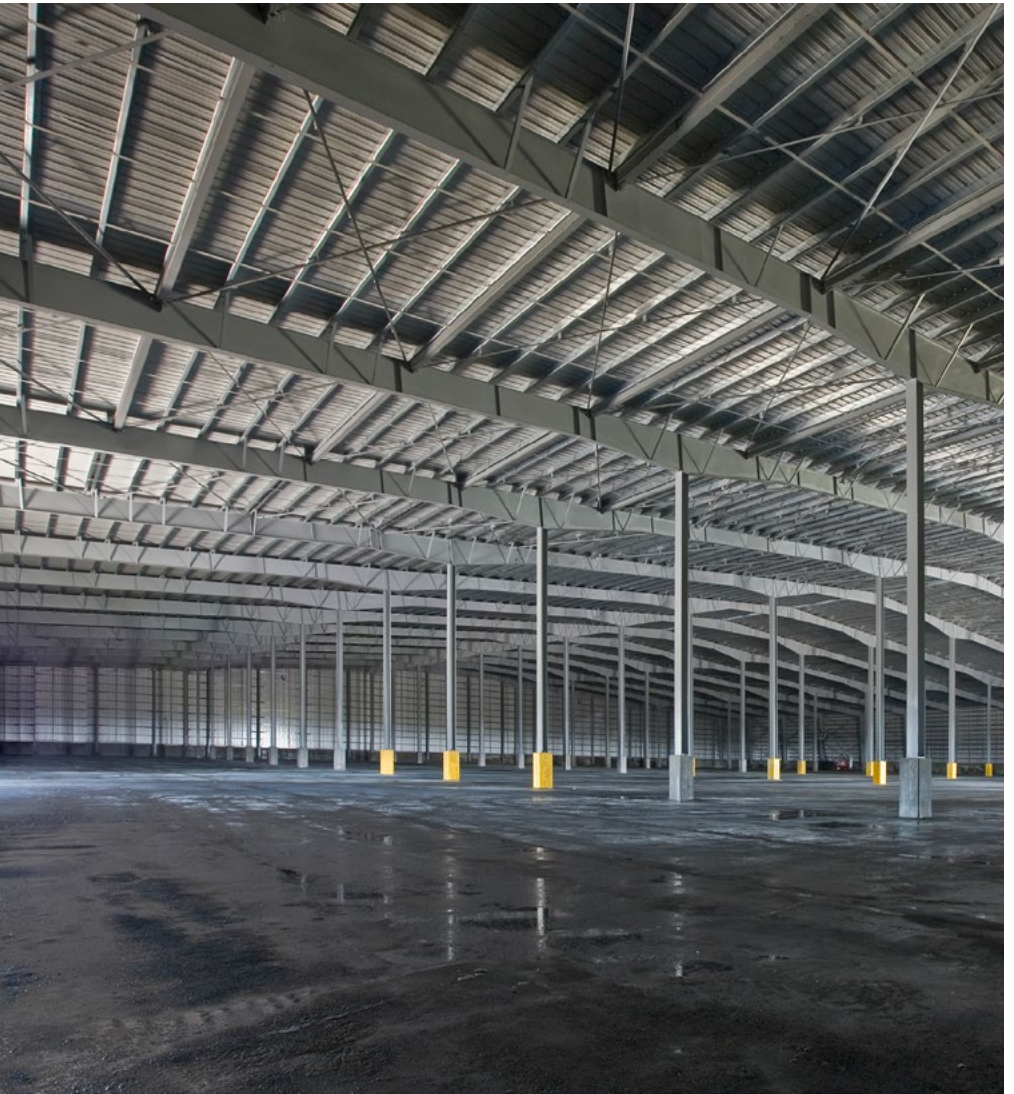


EXPERIENCE | OSCEOLA SUGAR PROCESSING WAREHOUSE





EXPERIENCE | **SUGAR CANE GROWERS COOPERATIVE WAREHOUSE**





EXPERIENCE | **TOTALBANK TURN-KEY PROGRAM MANAGEMENT FOR MULTIPLE FACILITIES**





EXPERIENCE | US CENTURY BANK VARIOUS LOCATIONS



“ ... Lemartec was the general contractor for our branch at 1100 East 4th Avenue, Hialeah, Florida. [ ] I am very pleased to recommend Lemartec with complete confidence. I am certain they will measure up to your expectations.

Ramon E. Rasco, Chairman  
U.S. Century Bank



EXPERIENCE | **FISH HATCHERY FARM**





EXPERIENCE | SEABOARD MARINE NEW MAINTENANCE AND OFFICE BUILDING AT PORTMIAMI





EXPERIENCE | **SUGAR WAREHOUSE ROOF REPLACEMENT AND RIDGE VENT INSTALLATION**





EXPERIENCE | GT GROUP PROFESSIONAL OFFICE BUILDING





EXPERIENCE | **OUR LADY OF BELEN CHAPEL**

**2023**  
**BUILD FLORIDA AWARDS, BUILDING NEW UNDER \$10M**  
**(RELIGIOUS USE FACILITY SOUTH FLORIDA)**  
South Florida Associated General Contractors of America (AGC)





EXPERIENCE | **201 DOUGLAS MINI SELF-STORAGE**





EXPERIENCE | MIAMI CITY SELF STORAGE - 36TH STREET





EXPERIENCE | **MIAMI CITY SELF STORAGE - 79TH STREET**





# Some of Our Prestigious Clients







*Lemartec Corporation, a MasTec company*

Contact: Maira Suarez - Vice President of Strategic Partnerships | e. [maisuar@lemartec.com](mailto:maisuar@lemartec.com) | t. 305.903.5089

 [Lemartec.com](http://Lemartec.com)  [Facebook.com/Lemartec](https://Facebook.com/Lemartec)  [@Lemartec](https://twitter.com/Lemartec)  [@LemartecCorporation](https://www.instagram.com/LemartecCorporation)  [Linkedin.com/company/Lemartec](https://www.linkedin.com/company/Lemartec)  <https://bit.ly/3b940ZZ>