

PROFESSIONAL PORTFOLIO **PORTS & TRANSPORTATION**

Lemartec Corporation, a MasTec company

Contact: Maira Suarez - Vice President of Strategic Partnerships | e. maisuar@lemartec.com | t. 305.903.5089



✦ a MasTec company

- As a wholly owned subsidiary and MasTec's General Contractor, a Minority-Certified Fortune 500 company with over \$13 Billion in revenue and over \$4 Billion in bonding capacity, Lemartec has the financial resources and stability to execute large projects successfully.
- With over 30,000 employees in more than 700 locations throughout the continental United States, Puerto Rico, the US Virgin Islands and Canada, Lemartec has the human resources and the technological infrastructure to execute locally anywhere in North America and the Caribbean.
- As a full service General Contractor and Program Manager, Lemartec leverages its resources and local market expertise to deliver complex, schedule driven and turn-key projects for public and private sector clients.

I want to personally thank you for your consideration and for the opportunity to be part of the team for your next project. We look forward to following up with you to discuss your needs and expectations in detail.

With every good wish,

Manuel R. Garcia-Tuñon
President



Finding the right Construction Partner with comprehensive capabilities and resources to perform large-scale projects is not easy to do. Lemartec is that company.

- Manuel R. Garcia-Tuñon

Who We Are

45+

YEARS OF INDUSTRY
EXPERIENCE

Lemartec is a national Prime General Contractor, Construction/Program Management Firm. As a MasTec company, we maintain international capabilities and strategic partnerships throughout the Americas and the Caribbean to service the most complex of projects throughout various industries.

As a MasTec Company, Lemartec is able to serve our diversified customer base through a network of 30,000 professionals and subject matter experts in Engineering, Procurement, and Construction across over 700 locations throughout North America and the Caribbean.

Forged by a safety-first and relationship-driven mindset, our company culture fosters trust and creates value for all stakeholders - our clients, employees, business partners, the community and the environment.

Our people work with a firm conviction that an integrated approach to design and construction is a critical success factor in each and every project we take on. This commitment to quality from the pre-construction phase through completion has been a corner stone to our success since our founding in 1979. Today, with innovative tenacity and entrepreneurial spirit, our dedicated team of engineering and construction experts continue to advance the Lemartec mission to design and build the best solution for our clients.

Our national client approach allows us to deliver consistent quality and promote the success of your program, not just a single project. We constantly look for ways to increase value and construction savings through value engineering, pre-construction services and a project controls approach during construction which provides our clients with complete visibility and peace of mind.

Comprehensive Services

- Prime General Contractor
- Preconstruction Services
 - » Building Retrofit
 - » Value Engineering
 - » Cost/Budget Management
 - » High Velocity Wind and Seismic Zones Structure Design
 - » Steel Building Engineering Design and Fabrication
- Construction Services
 - » Interior Build-out/Finishes: Self-perform and/or Program Management
 - » Comprehensive Program Management for Multiple Sites
 - » Fully integrated QA/QC Program
 - » Site-specific Safety Program
 - » Budget Management
 - » Permitting and Site Preparation
 - » Structural Erection/Self-Perform Steel Structure
 - » Competitive Subcontractor Bidding Process Management
 - » Equipment Procurement and Installation
 - » Emergency Recovery/Reconstruction

Expertise/Capabilities

- Commercial/Retail
- Sports and Entertainment Facilities
- Heavy/Light Industrial Facilities
- Distribution and Storage Facilities
- Aviation MRO hangars and FBOs
- Food and Beverage Facilities
- Pharmaceutical Laboratories
- Mass Grading
- Pre-Engineered Metal Buildings (PEMB)
- Mission Critical/Data Centers
- Power Generation, Transmission, Distribution
- Renewable Energy
- Oil/Gas Pipeline and Facilities
- Communication/Wireless/Wireline Fiber
- Water/Sewer/Civil
- Installations and Fulfillment

What Sets Us Apart



\$4 BILLION
BONDING CAPACITY



\$13 BILLION
IN REVENUE



\$905 MILLION
EQUIPMENT
FLEET

45+

YEARS
EXPERIENCE



700+
LOCATIONS

**TOP
WORK
PLACES
2023-2024**

SunSentinel
MEDIA GROUP



0.72
EMR
RATING



+30,000
EMPLOYEE
NETWORK

#4 ENR
TOP 400
CONTRACTORS | 2023

Our Parent Company, MasTec

80+
YEARS
EXPERIENCE

Over the course of the last 80 years, MasTec (a publicly traded, fortune 500 company) has been involved in some of the largest and most complex infrastructure construction projects around the country. Their experience has given us a deep and comprehensive understanding of the markets we serve, as well as the ability to effectively manage people, projects, and equipment. It allows us to proactively

identify challenges, avoid pitfalls, and overcome obstacles, and to accurately set and meet expectations for schedule and budget.

MasTec, Inc. and its subsidiaries work to continuously streamline and improve business through productivity, controls and accountability with strong organic growth and the ability to leverage company scale.

Backed by our parent company, Lemartec has the geographic reach, scalability and overall financial strength to deliver competitive, high quality of engineering, procurement and construction services with a unique expertise in steel design and construction.

FINANCIAL STRENGTH

Our strong financial position is a reflection of our proven and consistent ability to deliver projects safely and within budget. **Lemartec's speed and efficiency is backed by a bonding capacity of over \$4 Billion.**



MasTec's Expertise

Heavy Civil & Infrastructure



Rail



Communications



Power Generation



Water & Sewer



Oil & Gas



Industrial



Transmission & Substation



Clean Energy



General Building



Technology Deployment

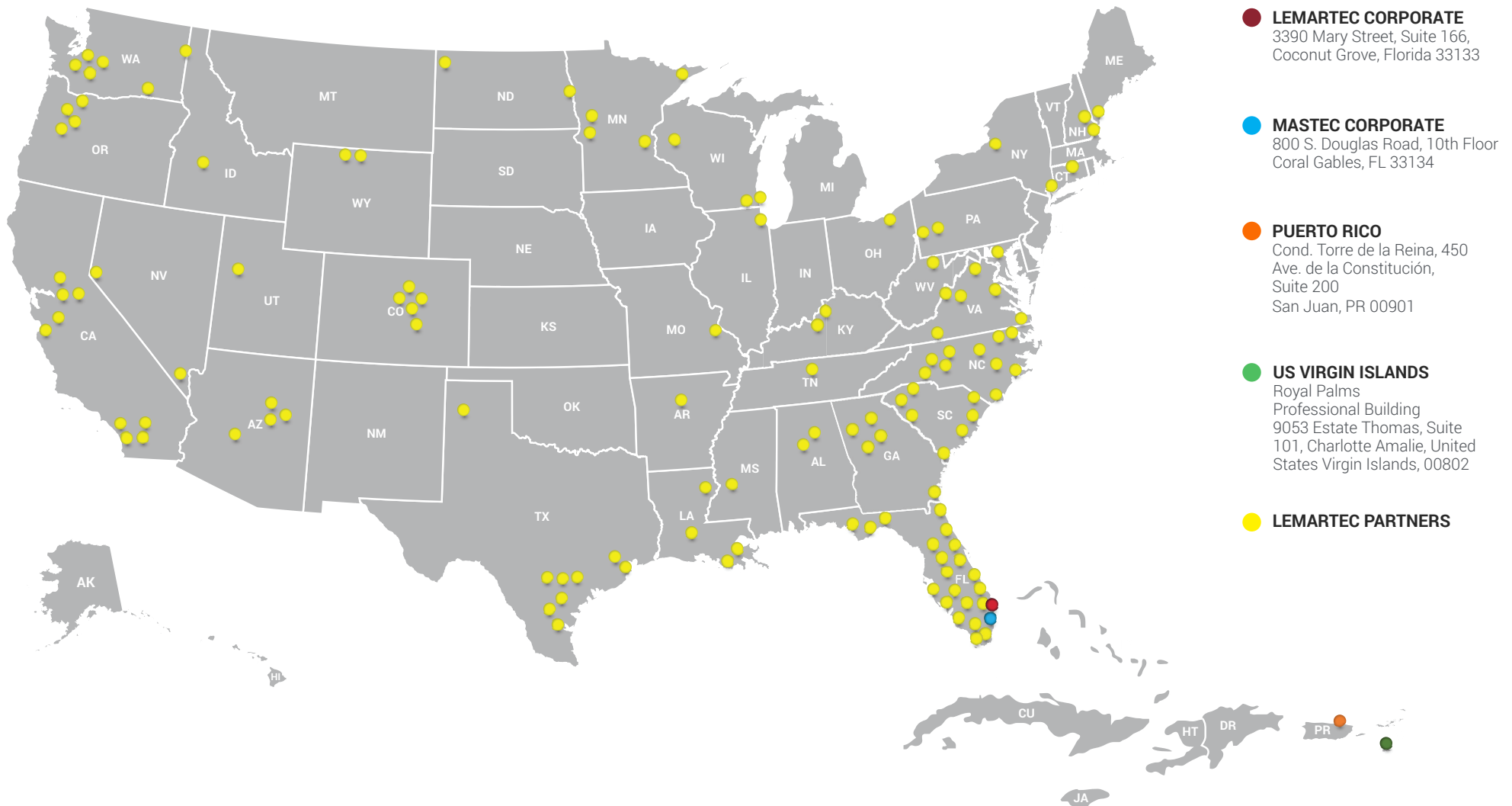


Over 700 Locations Across North America and the Caribbean

Our Team is comprised of more than 700 locations and strategic partnerships across North America and the Caribbean. We ensure that the services we provide meet or exceed our clients' expectations. We comply with industry best practices and continually improve the effectiveness of our quality management system, delivering customized solutions to our clients in the markets we serve.



Licensed and Insured as Professional Engineers and General Contractors in multiple states and across the Caribbean.



Minority Business Enterprise

MasTec is currently certified as a Minority-Controlled Company by the National Minority Suppliers Development Council (NMSDC).

This certification allows MasTec, and its subsidiaries, to be recognized as a minority contractor throughout the United States and across a range of industries.



NMSDC CORPORATE PLUS[®] MEMBER



Safety



AT LEMARTEC, SAFETY ISN'T JUST A PRIORITY - IT'S A CORE VALUE

Safety is a mindset and an attitude that all Lemartec employees carry with them daily. Lemartec is committed to continuous improvements in safety with a common goal of zero injuries, as well as taking an active part in initiatives that include development of “Best Practices” and training programs. Lemartec believes that a focus on environmental stewardship and innovation is paramount to everything we do. We work to stay at the forefront of safety and environmentally responsible construction, and to implement the application of these concepts throughout each project.

Lemartec has built a respected reputation in the construction industry through years of hard work, earned trust, and by instilling a safety culture in every single person that's part of our professional family. This safety culture is entrenched in our Think SAFE, Act SAFE, Be SAFE philosophy. A strong message that resonates in each and every project we take part in and that has shown results we can be proud of.

Moreover, our construction personnel is trained and certified in required safety programs including OSHA 10/30 hour, CPR, first aid and specialized training such as aerial lift training & job hazard analysis, from Project Executives to Project On-site Superintendents. The team holds weekly safety meetings on-site, toolbox talks, and ensures a properly branded site with a project-specific safety plan.



Lemartec field personnel are required to carry valid OSHA 30 certifications, demonstrating their comprehensive understanding of workplace safety standards. This certification ensures that employees have basic knowledge of OSHA regulations and applicable codes, enabling them to effectively implement and maintain safety procedures on job sites, thereby reducing risks and promoting a safer work environment.



Awards & Recognitions

NOTABLE ACHIEVEMENTS AND RECOGNITIONS FROM THE INDUSTRY

- **SFAGC Build Florida Award, Category: Transportation Under \$99M: Embassair FBO Hangar Terminal at Miami-Opa-Locka Executive Airport (2024)**
- **SFAGC Build Florida Award, Category: Athletic Facility (\$10M-\$75M): Baptist Health IcePlex (2024)**
- **SFAGC Build Florida Award, Building New \$10M-\$75M (Marine Facility South Florida): Grove Bay Marina Mixed-Use Hangars (2023)**
- **SFAGC Build Florida Award, Building New \$10M-\$75M (Transportation South Florida): Brightline Aventura Station (2023)**
- **SFAGC Build Florida Award, Building New Under \$10M (Religious Use Facility South Florida): Our Lady of Belen Chapel (2023)**
- **ENR SouthEast, Award of Merit - Cultural/Worship: Our Lady of Belen Chapel (2023)**
- **SFAGC Build Florida Award, Florida's Best Category: Design-Build over \$150M: PortMiami Terminal F Expansion (2023)**
- **MBCEA, Carolinas Chapter - Building of the Year Winner: PortMiami Terminal F Roof Retrofit (2023)**
- **ABC, Florida East Coast Chapter- Eagle Award Winner: PortMiami Terminal F Expansion (2023)**
- **ABC, Florida East Coast Chapter- Eagle Award Winner: Our Lady of Belen Chapel (2023)**
- **ABC, Florida East Coast Chapter- Pyramid Award Winner: Brightline Aventura Station (2023)**
- **ABC, Florida East Coast Chapter- Pyramid Award Winner: Grove Bay Marina Mixed-Use Hangars (2023)**
- **MBCEA, Carolinas Chapter - Building of the Year "Transportation Division" Winner: Bombardier Aircraft Maintenance Facility (2022)**
- **VP Buildings, Best of Category in "Transportation" Winner: PortMiami Terminal F Provisioning Building (2022)**
- **VP Buildings, Best of Category in "Miscellaneous" Winner: Autonation DRV PNK Stadium (2021)**
- **VP Buildings, Best of Category in "Warehouse" Winner: Dunham Bush Manufacturing and Storage Facility (2020)**
- **VP Buildings, Best of Category in "Recreation" Winner: University of Miami, Carol Soffer Indoor Football Practice Facility (2019)**
- **US. Department of Commerce: Southeast Region Top Minority Construction Firm of the Year (2018)**

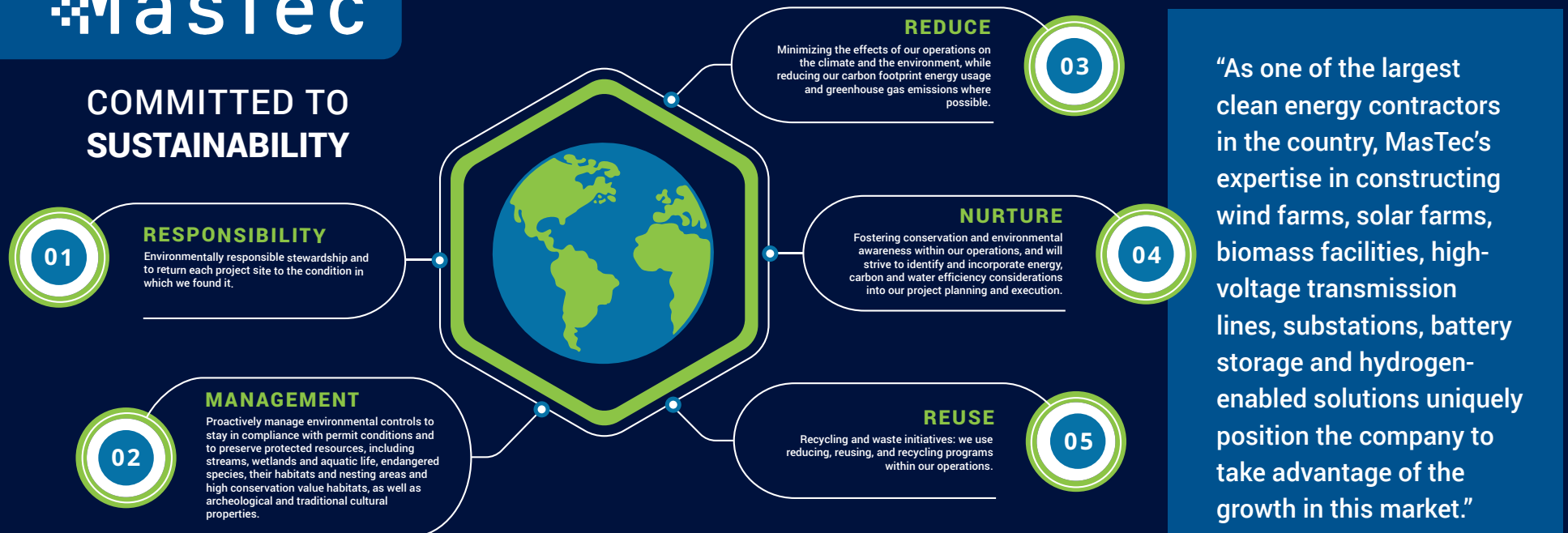
Our Sustainability Commitment Includes Environmental Stewardship

MasTec's sustainability principles and practices are embedded within our strategy, risk management and day-to-day operations. In 2020, MasTec formalized sustainability as part of our Board oversight function, as well as our policies on Human and Labor Rights and Safety, Health and Environmental matters. We engage with our stakeholders, both internal and external, to understand priority sustainability issues for our business and the world at large. The MasTec companies are all dedicated to the development of our sustainability framework, as well as our engagement and innovation because we understand that sustainable solutions are our responsibility.

We believe that we all play a role in environmental stewardship. We help our customers find solutions to their environmental goals and requirements and are likewise committed to responsibly managing the environmental impacts of our operations. Our customers rely on our expertise with governmental and regulatory agencies to meet increasingly stringent regulatory requirements. Environmental matters are an integral part of our business planning and decision-making processes. Our corporate policies and Code of Business Conduct and Ethics require that all applicable environmental regulations and compliance requirements are met in the course of our operations. Our planning processes incorporate procedures to ensure compliance with all such laws and regulations.

MasTec

COMMITTED TO SUSTAINABILITY



“As one of the largest clean energy contractors in the country, MasTec’s expertise in constructing wind farms, solar farms, biomass facilities, high-voltage transmission lines, substations, battery storage and hydrogen-enabled solutions uniquely position the company to take advantage of the growth in this market.”

- Zacks Equity Research

Community Involvement

The MasTec family of companies takes great pride in serving the communities within which we live and work. As a member of the Miami-Dade business community for over 40 years, we contribute to the economic growth and well-being of the County and its residents, including support of the United Way of Miami-Dade and by thousands of volunteer hours contributed each year by our employees. Lemartec is inspired by this same philosophy, actively supporting various events and causes throughout our local and regional offices in the Caribbean.



In 2019, the Tocqueville Society contributed \$15 million to support the Miami-Dade community through United Way, which represented 40 percent of the overall annual campaign, and it contributed \$14 million in 2018.



Incorporating Miami-Dade County certified Small Business Enterprise (SBE) firms on our projects, notwithstanding formal goals being in place. For example, Lemartec's Design-Build Services Contract for Cruise Terminal F Expansion and Berthing Re-Alignment Program, allocating over to \$12 Million to certified firms.



MasTec Proves the Power of Diversity

At MasTec, we believe our greatest asset is our people, and we work hard to provide a diverse and inclusive corporate culture. As the company has grown, MasTec has focused less on day-to-day operations and more on setting the strategic vision and refining the corporate culture. Having our employees focused on the same goals and ideals is paramount. Our workers want to understand how they make a difference, and how their daily efforts improve the company. Therefore, creating the right culture and atmosphere is central.

HispanicBusiness
500
LARGEST US HISPANIC-OWNED COMPANIES



“MasTec is the second-largest Minority - Controlled company in the United States, with more than 22,000 employees. In 2018, the company generated revenue of more than \$7 billion, earning it entry into the Fortune 500 – the first minority business enterprise to earn this distinction.”

Lemartec's Diversity in Management

“

Diversity should **always**
have a seat at the table.

- Manuel R. Garcia-Tuñon



Manuel R. Garcia-Tuñon
President



Kurt Dyer
Sr. Vice President
of Operations



Maira Suarez
Vice President of
Strategic
Partnerships



Anthony Feoli,
CPA, CMA
Chief Financial
Officer



Lynn Harwood
Vice President of
Building Systems
Division



Lindsay Levin, Esq.
Vice President &
Senior Legal
Counsel



Jose Garcia-Tuñon
Sr. Vice President
of Commercial
Services



Don Moore, MBA
Director of BSD
Operations



Jenny Pino
Director of Human
Resources



Robert Caicedo
Director of Marketing
& Communications



Francisco Pau
Director of
Estimating



David Mcfarlane
Director of Strategic
Partnerships -
Mission Critical



John Ugarte
Project Executive



Michael Smith
Project Executive



Sebastian Gomez
Project Manager



Felix Camacho
Project Director

Design-Build

From the initial client meeting through building occupancy and beyond, our professionals work with our clients and design partners to identify their project goals and objectives, schedule requirements, and budgetary parameters. Ultimately, we develop a holistic and symbiotic approach that is sensitive to the individual considerations of the client and their project, and which reflects and advances their mission.

01 PROJECT
CONCEPTION

02 PRELIMINARY
DESIGN

03 FINAL
PROJECT
DESIGN

04 SITE WORK
& STAGING

05 CONSTRUCTION
& EQUIPMENT
INSTALLATION

06 PROJECT
CLOSE-OUT

07 COMMISSIONING
OPERATIONS &
WARRANTIES

08 PROJECT
COMPLETION

“
Understanding Our Client's Processes as they relate to our design-build approach, has served as the **cornerstone** of our success.

- Manuel R. Garcia-Tuñon



Single Source of Accountability

The design-build approach provides a single source for your entire project. In the classic design-bid-build method the owner must; select an architect / designer, finalize the design, bid the project, select a contractor, and then act as an intermediary. The design-build method fosters teamwork and lends itself to cooperation. The relationship built during the design phase helps to ensure that the stage is set for a successful construction project.



Faster Project Completion

Design-build projects can be completed in a shorter amount of time because: bid time is reduced, scheduling for the project can begin before design is finalized, potential construction problems are uncovered early and enhanced communication keeps everything moving.



Budget Management

Discussing budget during the design phase (not waiting until the bids come in) helps to keep the projects within a realistic budget. Communicating the cost implications of design decisions ensures that the owner plays a key role in arriving at the final project price. The design-builder manages a “competitive bid process” for the owner at the subcontractor and supplier level to ensure the most competitive price for every trade. Once the scope of work has been finalized, the project costs are clearly defined and controlled by the design-build firm.



Quality Control

The design-build method helps to remove ambiguity that may arise in material and construction specifications. Since the designer, engineer and builder are from the same firm, the focus remains on protecting the client’s interest. Because of its inherent flexibility, design-build lends itself well to a variety of project types. By combining design and construction experience onto one team, the owner realizes the benefits of “one-stop-shopping” at its best.



Enhanced Communication

Specific design and construction details are being developed throughout the entire process and the focus stays on owner “value”. The communication benefits of working with a construction expert and design professional at the same time ensures that potential problems are discovered before the project starts, reducing execution risk.

Unique Expertise

Steel Building Systems

As a leading steel design and construction company, we have served public and private clients for their facility construction needs for over four decades, focusing in projects with commercial or industrial applications. It is through our “tip of the spear,” in-house engineering team specialized in metal buildings that our company can bring value and help you resolve the challenges you may be facing.

Though the synergies established with our manufacturer, we have access to important design technologies that can speed up the process of estimating the cost of a pre-engineered, conventional or a hybrid steel solution.

We have built Aviation MRO's and Hangars, Indoor Practice Facilities, Heavy Industrial Plants, and more. Because we have self-performing capabilities to furnish and erect steel structures, not only owners and end-users recur to Lemartec, but also major contractors seeking to release turn-key construction packages as part of a larger project or program.

BUILDING SYSTEMS LEADERSHIP



LYNN HARWOOD | VICE PRESIDENT, BUILDING SYSTEMS DIVISION

A civil engineer by profession, Mr. Harwood's career and contribution to the steel manufacturing, design and construction industries spans over 32 years. Mr. Harwood joined Lemartec to lead and grow the company's Building Systems division and enhance our world-class services in steel engineering and construction, all of which are put to the service of federal, public and private sector clients, and end-users in North America and abroad. With an unparalleled expertise in steel, Mr. Harwood can expeditiously identify and value engineer some of the most critical elements affecting cost and schedule on a project. Having Mr. Harwood as part of the team signifies that clients and end-users alike will benefit from higher returns on their investment and speed to market.

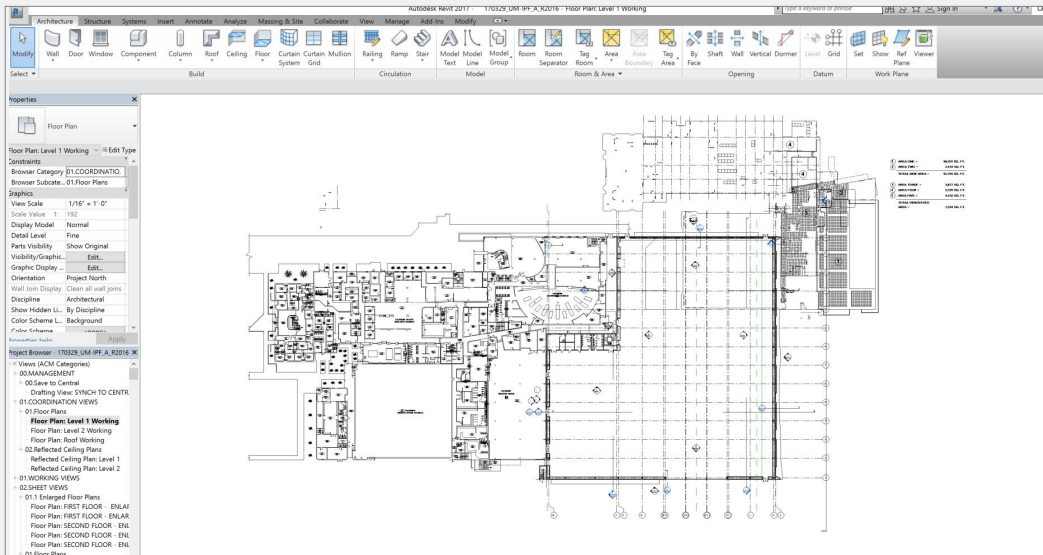


BIM Expertise with the power of AI

Lemartec's Building Systems Division utilizes **Building Information Modeling (BIM)** tools to facilitate better collaboration among stakeholders on a project. The team drives performance in the field and enables our on-site Project Managers, Project Field Engineers, Project Superintendents, and other field personnel to deliver highest quality on-time and within budget. The fact that we are a Design-Build firm with BIM capabilities in-house maximizes your return on investment, as our group collaborates with our design and steel manufacturing partners to create a fully integrated model and identify design conflicts, building fabrication errors, and omissions prior to construction.

Our engineers use best practices and techniques and the latest softwares including, but not limited to:

- AutoCAD
- Revit
- RISA
- Navisworks
- Sketchup
- VP Command



With the aid of BIM as an initial planning and program validation tool, the construction process results in:

Enhanced Quality

BIM allows constructability reviews to happen during the design phase. A clash-free BIM model ensures our team can prefabricate and install all building systems correctly the first time.

Flawless Execution

BIM eliminates costly rework during the construction phase and keeps the schedule progressing. BIM allows for more efficient use of material, labor, and pre-fabrication planning, reducing schedule timelines.

Cost Savings

BIM-based constructability reviews and clash detection avoid rework, and identifies any structural and architectural conflicts that may result from major equipment sizing and orientation. BIM increases prefabrication and captures its cost benefits.



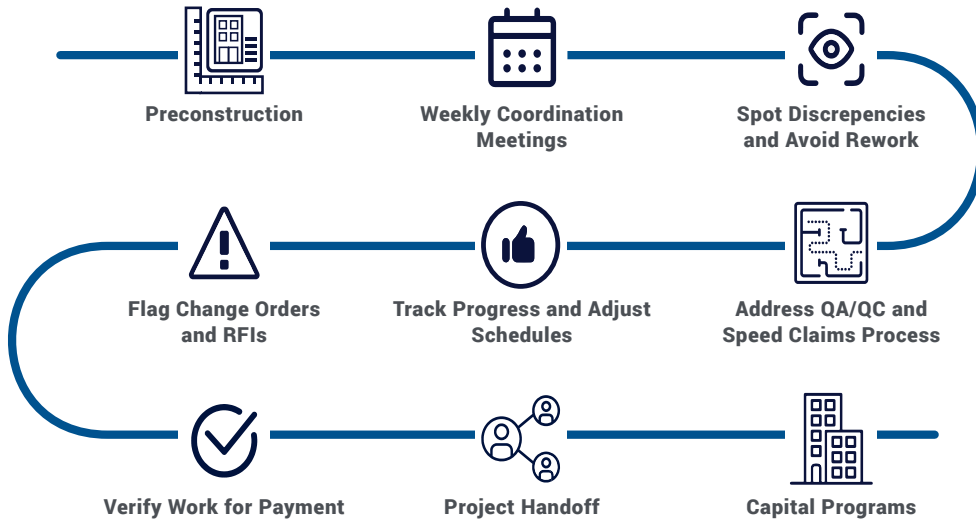
PortMiami, Cruise Terminal F Expansion and Berthing Re-Alignment Design/Build



We Capture the construction site with OpenSpace AI Technology

OpenSpace is the global leader in reality capture and AI-powered analytics for builders, empowering them to quickly capture a comprehensive visual record of their jobsites. The OpenSpace Vision Engine maps photos to the site plans automatically. From there, we get a complete, as-built record of the building from preconstruction to handover and operation.

OpenSpace increases visibility at every stage of construction:



The OpenSpace Difference



Complete Capture Made Easy

AI-powered software captures sites with unmatched speed and simplicity. Capture 150,000 square feet per hour— lightning fast, and hands-free. Get a live, as-built record from preconstruction to handover and operation.



Integrations and Scalability

OpenSpace is compatible with iOS and Android devices and they integrate with tools such as Procore, PlanGrid, Autodesk BIM 360, and more.



Streamlined Workflows

Enable better communication, faster decisions, and more precise scheduling by eliminating manual photo documentation, easily assigning field notes with complete visual context, and using shared folders to provide relevant OpenSpace data with stakeholders.



Real-Time Project Visibility

OpenSpace's Vision Engine automatically maps images to floor plans and within 15 minutes on average, anyone anywhere in the world can virtually walk through your site—as easy to navigate as Google Street View.



Better Coordination

OpenSpace provides a shared, visual record that equips field, office, and VDC teams to quickly identify and solve problems. Easily compare asbuilt conditions to the design intent, coordinate clearly, and eliminate unnecessary back and forth to keep the job moving.



Superpowers Enabled

Pull up a split screen and compare BIM to as-built, travel back in time, and see through walls, slabs, and ceilings.



Value Engineering Advantage

Lemartec offers value engineering and analysis that are unmatched in the industry. Value Engineering is a systematic and structured approach for improving projects, products and processes. It is used to analyze and improve design and construction projects to achieve an optimum balance between function, performance, quality, safety and cost. The proper balance results in the maximum value for the project.



COST REDUCTION

Suggestions of less expensive alternatives to specified materials or systems.



VALUE ADDED

Higher quality products that will increase value for the client and overall satisfaction with the project.



LIFE-CYCLE ANALYSIS

Options that work to create a balance between initial construction costs and the longterm operational budget of the development.



VALUE ENGINEERING SUCCESS STORY: DUNHAM BUSH NEW MANUFACTURING AND STORAGE FACILITY

This 99,912 SF project was designed for tilt-up concrete panels with metal joists, decking and a conventional rubber roof. As a value engineering approach, Lemartec suggested a hybrid alternative that combined conventional steel with pre-engineered steel members.

Lemartec also analyzed the cost and life-cycle of a 20-year structural standing seam roof which would accommodate the inclusion of PRISMAX, allowing for more natural light. This approach would provide additional cost savings over the lifetime of the building.

This is the first project in South Florida to utilize a hybrid structural framing approach with concrete tilt-up construction and a structural standing seam roof system. No other bidder was able to perform this level of analysis. Due to Lemartec's exclusive



Our Strategic Partner

VP Buildings



Varco Pruden (VP) Buildings is a world leader in providing innovative pre-engineered steel building systems. Each year, VP supplies approximately 6,000 buildings ranging from 1,200 square feet to more than one million square feet under roof. With headquarters in Memphis, Tennessee, and manufacturing and service centers located from coast to coast, they provide buildings throughout North America.

Varco Pruden Buildings specializes in the computer-aided design of steel & pre-engineered metal building systems construction. Through the use of the company's advanced engineering programming, Varco Pruden combines steel structural materials with virtually any exterior finish to create metal buildings that are energy efficient and provide years of trouble-free performance.



Thompson S Baker Cement Plant - Newberry, FL (Courtesy of VP Buildings)

PARTNERSHIP WITH
VP BUILDINGS -
**A SOLID RELATIONSHIP
FOR OVER 35 YEARS**



Roquette America, Inc., Co-Generation Facility - Keokuk, IA (Courtesy of VP Buildings)

Lemartec, together with Varco Pruden, is the ultimate building solution for your steel construction, metal building, and hybrid construction needs.



Front Street Shipyard, Belfast, ME (Courtesy of VP Buildings)

Our Strategic Partner

American Buildings

AUTHORIZED BUILDER



AMERICAN
BUILDINGS

a **NUCOR**® brand

American Buildings' custom engineered metal building solutions offer unsurpassed flexibility, speed of construction, superior structural strength, and innovative features – delivered on time.

By partnering with American Buildings, Lemartec offers clients the most versatile, energy-efficient and cost-effective building solutions on the market today. Whether you need 10,000 sf or 100,000 sf, from heated to unheated, strictly climate controlled or refrigerated, the configuration and expansion capabilities of our custom metal buildings are endless, making them the perfect solution for your new facility. American Buildings systems also utilize green building materials, which can help lower total operational costs, while other features or specialty equipment can be incorporated to increase your building's safety and performance. Plus, American Buildings' products are proudly made in the USA from steel that is over 70% recycled, so you can reduce waste and feel good about your choice to use an American Buildings metal building.

Lemartec is committed to providing our customers with the best possible products and services, and that's why we use American Buildings.

At Lemartec, every project is custom-designed and fabricated by our partner, American Buildings, to meet our customers' unique needs.





Baptist Health
ICEPLEX



Baptist Health
ICEPLEX

Unique Expertise

Commercial/Retail/ Interior Finishes

We treat every project as if it were our only one, because we understand how important it is for our clients to differentiate themselves within their industries. Our professionals offer a true turn-key solution that includes a deep understanding of how your brand is reflected in the work we do, all while providing the highest quality of detail and client service that help you take care of what you do best.

You need a contractor that knows how to work together with your architect from the beginning to identify design elements that will have significant cost implications on your project and to offer you the most economical and aesthetically pleasing solution. From value engineering, cost control estimates, schedule and constructability analysis, to alternate methods and materials studies, the result is efficiency, quality, and long-term relationships with our clients. Lemartec's highly skilled team of professionals are ready to meet all your projects requirements.





Our Project Experience

Over the course of our company's history, we have grown and changed in many ways except one – our reputation for delivering the highest quality service. Because of the confidence our clients have placed in us, we've been able to move into new geographies and expand our capabilities to better service our client's needs, becoming the respected company we are today.

Our passion for excellence is born from this deep and rich legacy of loyalty to the people we serve, the projects we deliver, and to the communities in which we live and work.

To effectuate a better understanding of our commitment to you and our capacity to deliver your project successfully we have selected a small sampling of our past work – each project reflecting specific synergies to your project objectives.





Our Team's Experience



MAIRA SUAREZ

VP OF STRATEGIC PARTNERSHIPS

- PortMiami, Cruise Terminal F Expansion and Berthing Re-Alignment Design/Build – Miami, FL
- Brightline Aventura Station – Aventura, FL
- Chase Stadium and Training Facilities – Ft. Lauderdale, FL



KURT DYER

SENIOR VP OF OPERATIONS

- PortMiami, Cruise Terminal F Expansion and Berthing Re-Alignment Design/Build – Miami, FL
- Brightline Aventura Station – Aventura, FL
- Chase Stadium and Training Facilities – Ft. Lauderdale, FL



FELIX CAMACHO

DIRECTOR OF FIELD OPERATIONS

- PortMiami, Cruise Terminal F Expansion and Berthing Re-Alignment Design/Build – Miami, FL
- South Florida Container Terminal (SFCT) Administration Office Building and Service Station – Miami, FL



JORGE UGARTE

PROJECT EXECUTIVE

- Waste Management Truck Maintenance Facility – Okeechobee, FL
- City of Aventura Parking Garage – Aventura, FL*
- Leon Medical Centers Flagler Parking Garage – Miami, FL*

Our team of experienced professionals bring a broad range of Port, Transportation, Commercial, Hospitality, and Recovery Programs related project experience in the U.S. and the Caribbean.



LYNN HARWOOD

VP - BUILDING SYSTEMS DIVISION

- PortMiami, Cruise Terminal F Expansion and Berthing Re-Alignment Design/Build – Miami, FL
- Chase Stadium and Training Facilities – Ft. Lauderdale, FL
- LAN Cargo Office Building and MRO at Miami International Airport – Miami, FL
- Dover Air Force Base Air Freight Terminal – Dover, DE*
- Greyhound Station – Sacramento, CA*
- Jacksonville Bus Station – Jacksonville, FL



MATTHEW WASALA, ASSOC. AIA, CSI

SENIOR PROJECT MANAGER

- PortMiami, Cruise Terminal F Expansion and Berthing Re-Alignment Design/Build – Miami, FL
- PortMiami Terminal F Renovation – Miami, FL*
- PortMiami Miscellaneous Projects Contract – Miami, FL*
- Brightline Aventura Station – Aventura, FL
- Sasebo Cruise Terminal Competition – Japan*



TONY MANNING

GENERAL SUPERINTENDENT

- PortMiami, Cruise Terminal F Expansion and Berthing Re-Alignment Design/Build – Miami, FL
- Terminal 29 Parking Garage and Harbour Master Tower – Ft. Lauderdale, FL*
- Port Everglades Midport Parking Garage – Ft. Lauderdale, FL*
- Ravenswood Bus Maintenance Facility – Dania Beach, FL*

** Previous experience before joining Lemartec*



PortMiami Terminal F Renovations – Miami, FL



Ravenswood Bus Maintenance Facility – Dania Beach, FL



Sasebo Cruise Terminal Competition – Japan



PortMiami, Terminal B Design Build Competition – Miami, FL



Seaboard Maintenance & Office Building – Miami, FL



Brightline Aventura Station – Aventura, FL



Jacksonville Bus Station – Jacksonville, FL



Greyhound Station – Sacramento, CA



Virgin Islands Port Authority Administration Building



LAN Cargo Office Building and MRO at Miami International Airport – Miami, FL



Dover Air Force Base Air Freight Terminal – Dover, DE



Leon Medical Centers, Flagler Parking Garage – Miami, FL



Marriott Dadeland Hotel – Miami, FL

Our Strategic Partners



DANIEL PEREZ-ZARRAGA AIA

PRINCIPAL, PRINCIPAL ARCHITECT, PEREZ & PEREZ ARCHITECTS PLANNERS

- PortMiami, Cruise Terminal F Expansion and Berthing Re-Alignment Design/Build – Miami, FL
- PortMiami 2020 Master Implementation Plan / Cruise Terminal Design Criteria – Miami, FL
- PortMiami Command & Control Center (C3) – Miami, FL
- MIA Concourse A-B Infill Shell and Interior Finish-Out – Miami, FL
- MIA Concourse C-D Infill and D Extension – Miami, FL
- Virgin Islands Port Authority (VIPA) Recovery Program Management Services

PEREZ & PEREZ
ARCHITECTS PLANNERS



ARTURO DI MAURO

PRESIDENT, GRYPHON CONSTRUCTION SERVICES, INC.

- PortMiami, Cruise Terminal F Expansion and Berthing Re-Alignment Design/Build – Miami, FL
- PortMiami Terminal F Upgrades Design-Build – Miami, FL
- MSC Cruise Terminal AAA– Miami, FL
- MCC- 8 Miami International Airport – Miami, FL
- FLL Terminal 4 Eastern Expansion – Miami, FL



Lemartec was contracted by Miami-Dade County as the design builder for the Port Miami Design/Build Cruise Terminal F Berthing and Realignment project. That success is attributed to strategic partnerships with firms that have longstanding relationships with Lemartec, and have proven Terminal design and construction experience.

Perez & Perez Architects Planners, together with **Gryphon Construction Services** bring over 50+ years of combined experience on a wide range of Port and Transportation related projects from design-phase through construction.



PortMiami Terminal F Renovations – Miami, FL



PortMiami Terminal D – Miami, FL



MSC Cruise Terminal AAA – Miami, FL



MIA Concourse D Extension – Miami, FL



PortMiami Command & Control Center (C3) – Miami, FL

EXPERIENCE | PORTMIAMI, CRUISE TERMINAL F EXPANSION AND BERTHING RE-ALIGNMENT DESIGN/BUILD

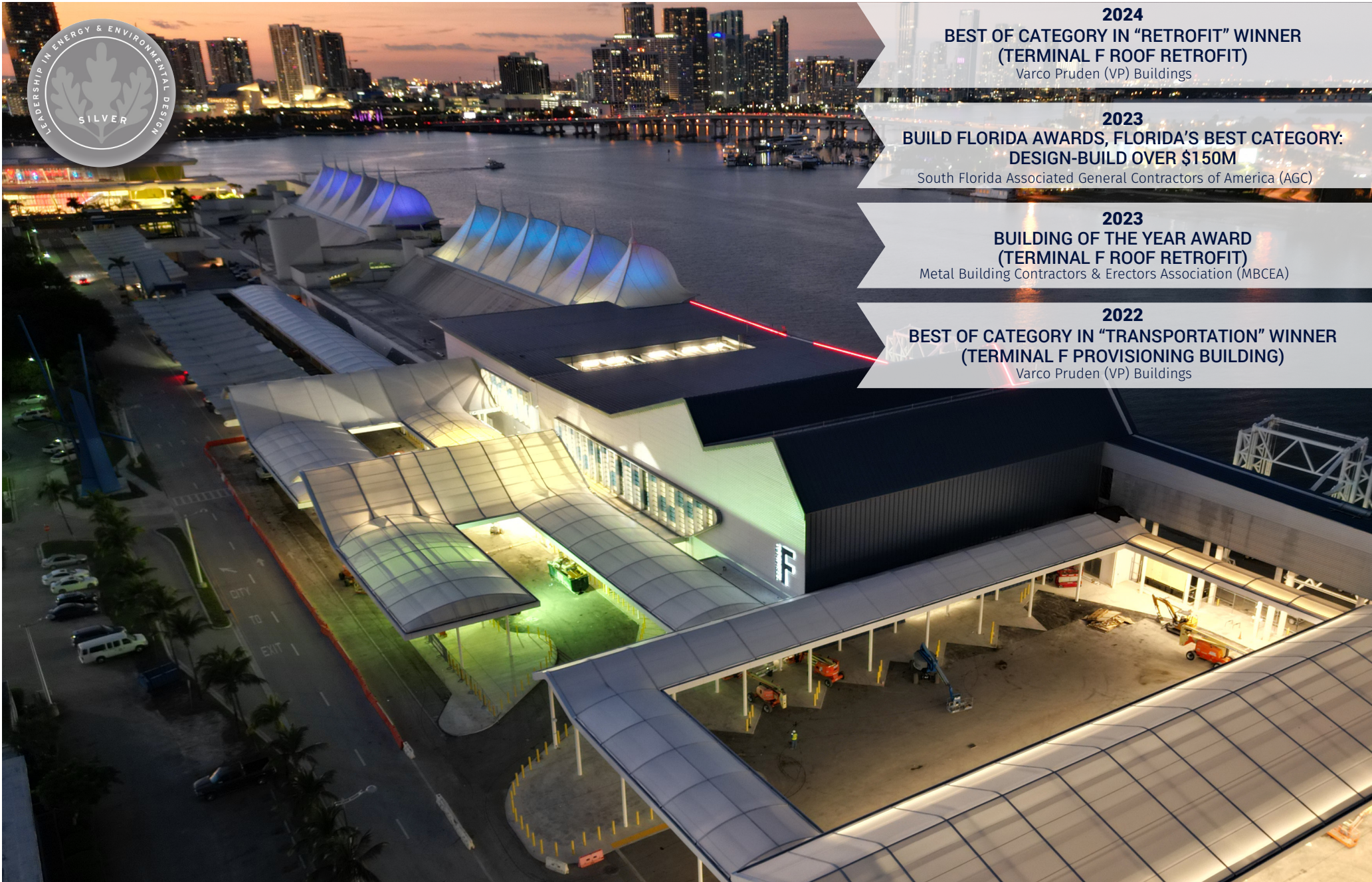


2024
BEST OF CATEGORY IN "RETROFIT" WINNER
(TERMINAL F ROOF RETROFIT)
Varco Pruden (VP) Buildings

2023
BUILD FLORIDA AWARDS, FLORIDA'S BEST CATEGORY:
DESIGN-BUILD OVER \$150M
South Florida Associated General Contractors of America (AGC)

2023
BUILDING OF THE YEAR AWARD
(TERMINAL F ROOF RETROFIT)
Metal Building Contractors & Erectors Association (MBCEA)

2022
BEST OF CATEGORY IN "TRANSPORTATION" WINNER
(TERMINAL F PROVISIONING BUILDING)
Varco Pruden (VP) Buildings





EXPERIENCE | **BRIGHTLINE WEST AVENTURA PASSENGER RAIL STATION**

2023
BUILD FLORIDA AWARDS, BUILDING NEW \$10M-\$75M
(TRANSPORTATION SOUTH FLORIDA)
South Florida Association of General Contractors (AGC)





EXPERIENCE | **EMBASSAIR FBO HANGAR TERMINAL AT MIAMI-OPA-LOCKA EXECUTIVE AIRPORT**

2024
BUILD FLORIDA AWARDS
CATEGORY: TRANSPORTATION UNDER \$99M
South Florida Association of General Contractors (AGC)





EXPERIENCE | **BOMBARDIER AIRCRAFT MAINTENANCE FACILITY**

2022

BUILDING OF THE YEAR “TRANSPORTATION DIVISION” WIN-
Metal Building Contractors & Erectors Association (MBCEA) Carolinas Chapter





EXPERIENCE | **VIRGIN ISLANDS PORT AUTHORITY PROGRAM MANAGEMENT SERVICES**





EXPERIENCE | **LAN CARGO MAINTENANCE FACILITY & OFFICE BUILDING AT MIAMI INTERNATIONAL AIRPORT**

2016
BUILDING OF THE YEAR WINNER
Metal Building Contractors & Erectors Association (MBCEA)





“

LATAM AIRLINES GROUP is... extremely satisfied with the quality of the VP building. We are impressed by the flawless production and project coordination between VP and Lemartec Corporation. Lastly, the most important accolades are they completed the project on time.... I highly recommend the Lemartec Corporation for any aviation construction/development projects.

Martin A. Donnari, VP of Maintenance & Engineering
LAN Cargo, S.A.



EXPERIENCE | SOUTH FLORIDA CONTAINER TERMINAL ADMINISTRATION OFFICE BUILDING & SERVICE STATION

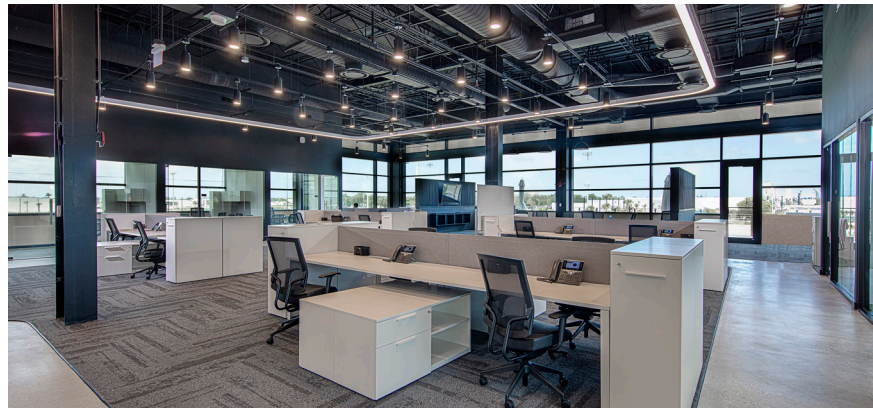




EXPERIENCE | CHASE STADIUM AND TRAINING FACILITIES

2021
BEST OF CATEGORY IN "MISCELLANEOUS" WINNER
Varco Pruden (VP) Buildings





EXPERIENCE | **BAPTIST HEALTH ICEPLEX**

2024
BUILD FLORIDA AWARDS
CATEGORY: ATHLETIC FACILITY (\$10M-\$75M)
South Florida Association of General Contractors (AGC)





Some of Our Prestigious Clients



PORTMIAMI



BOMBARDIER



CATERPILLAR







Lemartec Corporation, a MasTec company

Contact: Maira Suarez - Vice President of Strategic Partnerships | e.maisuarez@lemartec.com | t. 305.903.5089

 [Lemartec.com](https://www.lemartec.com)  [Facebook.com/Lemartec](https://www.facebook.com/Lemartec)  [@Lemartec](https://twitter.com/Lemartec)  [@LemartecCorporation](https://www.instagram.com/LemartecCorporation)  [Linkedin.com/company/Lemartec](https://www.linkedin.com/company/Lemartec)  <https://bit.ly/3b940ZZ>